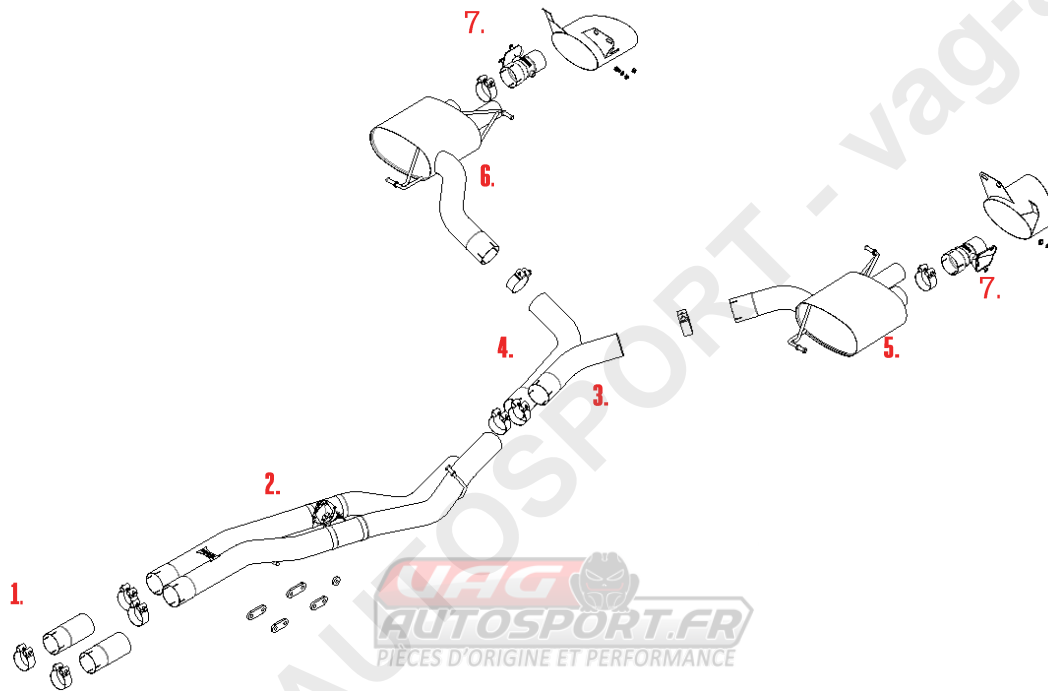


VEHICLE AUDI RS6 C8
YEAR 2020 - ON

SYSTEM NO
NOTES EC APPROVED



PART NUMBER	DESCRIPTION	QUANTITY	IN PACKAGE	
1.	F5150 CHC79SS	ADAPTOR 79MM CLAMP	2 2	
2.	MSAU746	ACTIVE CENTRE SECTION	1	
	CHC83SS	83MM CLAMP	2	
	F20465	SPACER	2	
	F20466	SPACER	2	
	F20467	SPACER	1	
	MSWL005	WIRING LOOM	1	
ACTUATOR AND SPRING SUPPLIED WITH MSAU746 VALVE MUST BE ATTACHED TO PART				
3.	MSAU747	LH CONNECTING PIPE	1	
	CHC83SS	83MM CLAMP	1	
4.	MSAU748	RH CONNECTING PIPE	1	
	CHC83SS	83MM CLAMP	1	
5.	MSAU749	LH REAR SECTION	1	
	CHC83SS	83MM CLAMP	1	

6.	MSAU750	RH REAR SECTION	1	
	CHC83SS	83MM CLAMP	1	
7.	MSAU751	VALVE ASSEMBLY	2	
	CHC79SS	79MM CLAMP	2	
	SPRING04	SPRING	2	
	ACTUATOR01	ACTUATOR	2	
ACTUATOR AND SPRING MUST BE ATTACHED TO PART				

TIP OPTIONS

1.	MSTIP269	LH TIP ASSEMBLY (POL)	1	
	F3043	SPACER	1	
	M8BZPFLNUT	M8 FLANGE NUT	1	
2.	MSTIP270	RH TIP ASSEMBLY (POL)	1	
	M8X16BZP	M8 X 16MM LONG BOLT	1	
	8MMWASHER	8MM WASHER	1	
	M8BZPFLNUT	M8 FLANGE NUT	2	

