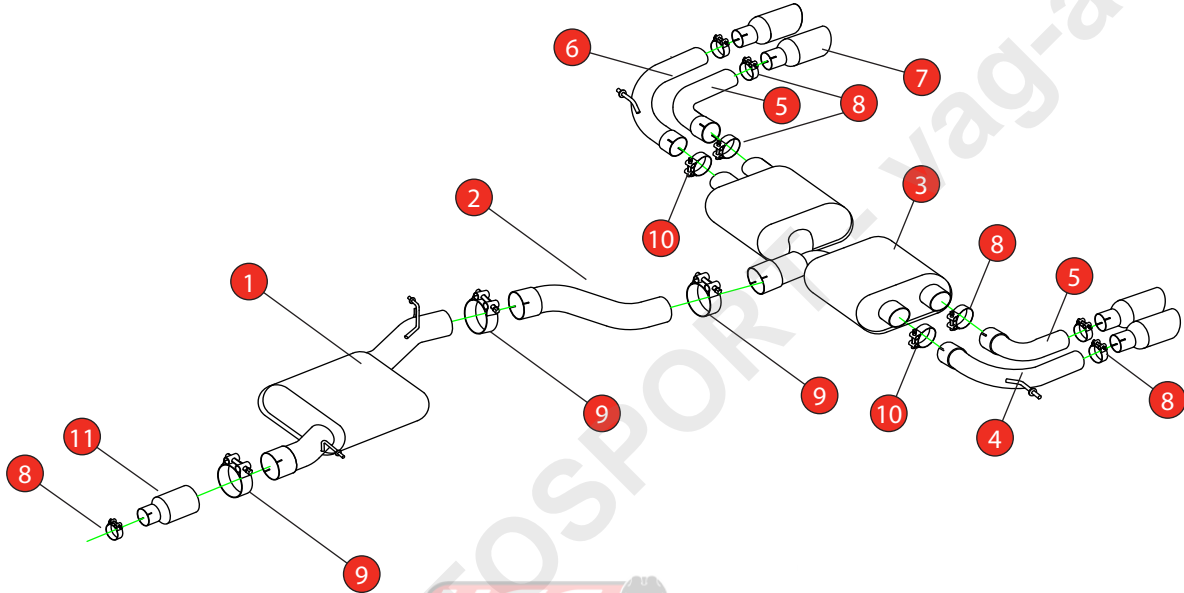


<b>Car</b>	Cupra Formentor 2.0 TSI 4Drive 310	<b>Part No.</b>	SST016C
<b>Year</b>	2020-Current	<b>Fit Kits</b>	390FK
<b>Notes</b>	Where not supplied use original fittings	<b>Features</b>	Pipe Diameter:- 80mm

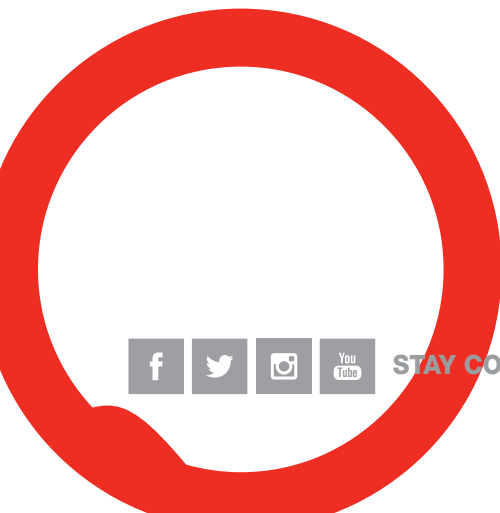
Estimated Fitting Time: 2 Hours



NO.	PART NO.	DESCRIPTION	QTY
1	763VW	Resonated Centre Section	1
2	765VW	Link Pipe	1
3	766VW	Rear Silencer	1
4	112ST	L/H Outer Trim Connecting Pipe	1
5	114ST	L/H & R/H Inner Trim Connecting Pipe	2
6	113ST	R/H Outer Trim Connecting Pipe	1
7	Z043.10204	Ø100mm Black Ceramic Daytona Trim	4
<b>Fit Kit</b>			
8	Z016.10064	63-68mm Clamp	7
9	Z016.10069	79-85mm Clamp	3
10	Z016.10070	66mm H/D Clamp	2
11	AD132	Adaptor (USE TO FIT TO O.E DOWNPIPE)	1

DATE	15/08/2022
ISSUE	01
AUTHORISED	S Shipley

**NOTE:** ENSURE SCORPION SYSTEM IS CLEAR OF MOVING PARTS AND ALL ORIGINAL FUNCTIONS WORK CORRECTLY.



STAY CONNECTED TO RED POWER.

Car	Cupra Formentor 2.0 TSI 4Drive 310	Part No.	SST016C
Year	2020-Current	Fit Kits	390FK
Notes	Where not supplied use original fittings	Features	Pipe Diameter:- 80mm



A) After you have removed O.E exhaust you will need to swap the valve motors to the Scorpion exhaust. Remove the 3 nuts (keep safe as you will need them to bolt the electronic valve motor to Scorpion Exhaust).

B) Lift up the motor. You will now be able to see the torsion spring (This must stay on the electronic valve motor to work with Scorpion Exhaust).

C) Rotate Scorpion valve so it aligns with the torsion spring.

D) Now fit the O.E electronic valve motor ensuring the spring seats correctly to the lugs of the valve.

E) Using the 3 O.E nuts secure in place.

F) Both of the rear mounting points need rotating 180° when fitting the Scorpion exhaust.

Once happy with fitment of Scorpion Exhaust, fully tighten up all clamps and fixing and plug in the electronic valve motors.



STAY CONNECTED TO RED POWER.