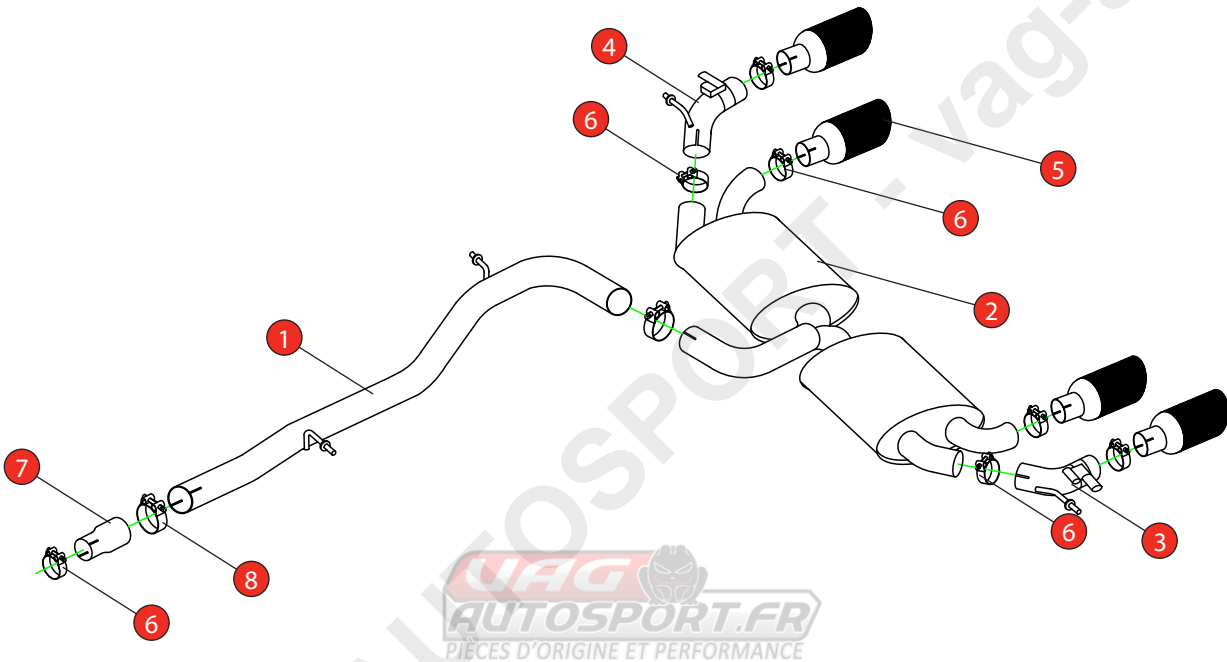


Car	Audi SQ2	Part No.	SAUS090CF
Year	2019-Current	Fit Kits	198 FK
Notes	Where not supplied use original fittings	Features	Pipe Diameter:- 76mm

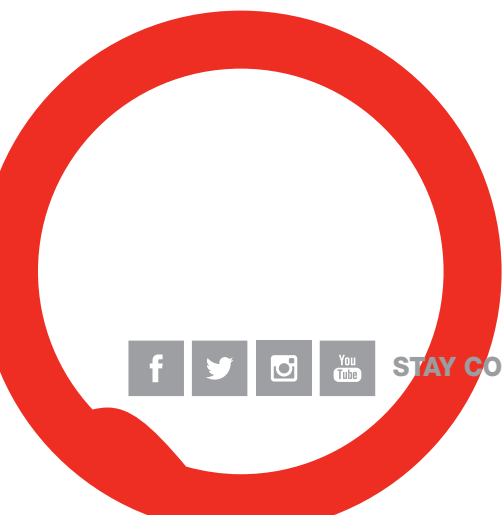
Estimated Fitting Time: 2 Hours



NO.	PART NO.	DESCRIPTION	QTY
1	548AU	Non-resonated Centre Section	1
2	786AU	Rear Silencer	1
3	787AU	L/H Valved Trim Connecting Pipe	1
4	788AU	R/H Valved Trim Connecting Pipe	1
5	Z023.10159	Ø100mm Carbon Fibre Ascari Trim	4
Fit Kit			
6	Z016.10064	63-68mm H/D Clamp	7
7	AD62	Adaptor	1
8	Z016.10062	79mm H/D Clamp	2

E-MARK	N/A
DATE	21/01/21
ISSUE	00
AUTHORISED	M.Ydlibi

NOTE: ENSURE SCORPION SYSTEM IS CLEAR OF MOVING PARTS AND ALL ORIGINAL FUNCTIONS WORK CORRECTLY.



STAY CONNECTED TO RED POWER.

Car	Audi SQ2	Part No.	SAUS090CF
Year	2019-Current	Fit Kits	198 FK
Notes	Where not supplied use original fittings	Features	Pipe Diameter:- 76mm



A) After you have removed O.E exhaust you will need to swap the valve motors to the Scorpion exhaust. Remove the 3 nuts (keep safe as you will need them to bolt the electronic valve motor to Scorpion Exhaust).

B) Lift up the motor. You will now be able to see the torsion spring (This must stay on the electronic valve motor to work with Scorpion Exhaust).

C) Rotate Scorpion valve so it aligns with the torsion spring.

D) Now fit the O.E electronic valve motor ensuring the spring seats correctly to the lugs of the valve.

E) Using the 3 O.E nuts secure in place.

F) Both of the rear mounting points need rotating 180° when fitting the Scorpion exhaust.

G) Unclip the valve cables before fitting the Scorpion exhaust. Ensure the cables to not touch the exhaust once it's fitted.

Once happy with fitment of Scorpion Exhaust, fully tighten up all clamps and fixing and plug in the electronic valve motors.