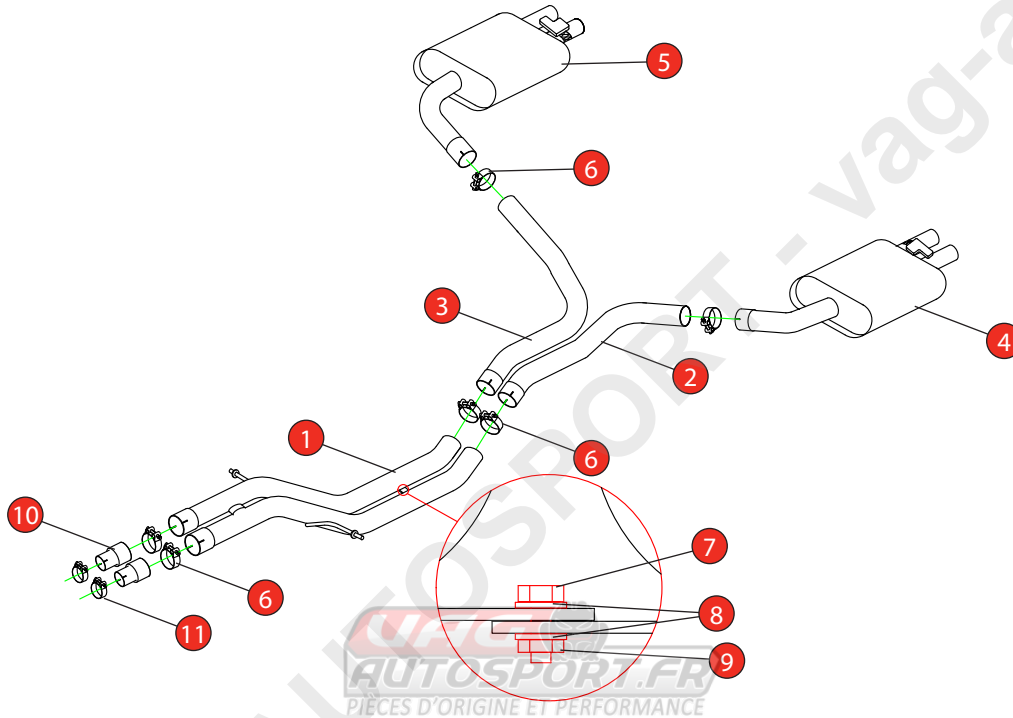


<b>Car</b>	Audi RS6 Avant C7 / Audi RS7	<b>Part No.</b>	SAUS087
<b>Year</b>	2014-2018	<b>Fit Kits</b>	367FK
<b>Notes</b>	Where not supplied use original fittings	<b>Features</b>	Pipe Diameter:- 70mm

Estimated Fitting Time: 2 Hours



NO.	PART NO.	DESCRIPTION	QTY
1	799AU	Non-resonated Centre Section	1
2	863AU	L/H Rear Link Pipe	1
3	864AU	R/H Rear Link Pipe	1
4	865AU	L/H Rear Silencer	1
5	866AU	R/H Rear Silencer	1
<b>Fit Kit</b>			
6	Z016.10063	72mm H/D Clamp	4
7	Z017.10044	M8 Hex Head Bolt	1
8	Z017.10831	M8 x 17mm Washer	2
9	Z017.10063	M8 Nut	1
10	AD40	Adator (USE TO FIT TO O.E SYSTEM)	2
11	Z016.10001	59-63mm Clamp (USE TO FIT TO O.E SYSTEM)	2

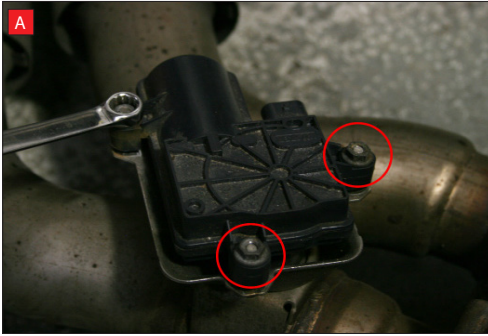
DATE	08/08/2022
ISSUE	04
AUTHORISED	S Shipley

**NOTE:** ENSURE SCORPION SYSTEM IS CLEAR OF MOVING PARTS AND ALL ORIGINAL FUNCTIONS WORK CORRECTLY.



STAY CONNECTED TO RED POWER.

Car	Audi RS6 Avant C7 / Audi RS7	Part No.	SAUS087
Year	2014-2018	Fit Kits	367FK
Notes	Where not supplied use original fittings	Features	Pipe Diameter:- 70mm



A) After you have removed O.E exhaust you will need to swap the valve motors to the Scorpion exhaust. Remove the 3 nuts (keep safe as you will need them to bolt the electronic valve motor to Scorpion Exhaust).

B) Lift up the motor. You will now be able to see the torsion spring (This must stay on the electronic valve motor to work with Scorpion Exhaust).



C) Rotate Scorpion valve so it aligns with the torsion spring.

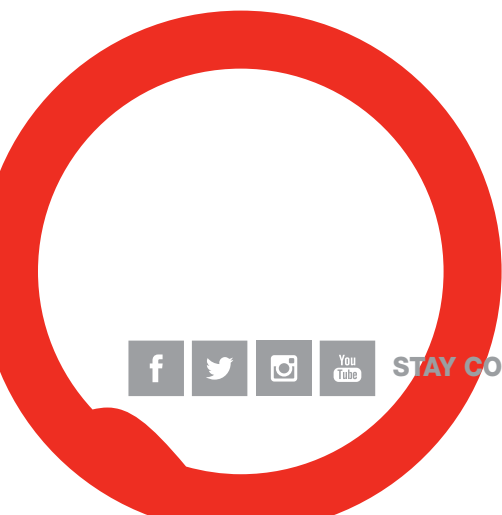
D) Now fit the O.E electronic valve motor ensuring the spring seats correctly to the lugs of the valve.

E) Using the 3 O.E nuts secure in place.



F) When fitting the centre section use the nut and bolt provided to align the centre pipes and secure them in place.

Once happy with fitment of Scorpion Exhaust, fully tighten up all clamps and fixing and plug in the electronic valve motors.



STAY CONNECTED TO RED POWER.