

CTSTURBO

INSTALLATION GUIDE

8V/8S Audi RS3/TTRS
Turbo Inlet



20630 Mufford Crescent, Unit #309
Langley, British Columbia V2Y 2V9

www.CTSTURBO.com

WHAT IS INCLUDED

1. CTS turbo inlet pipe
2. Hardware



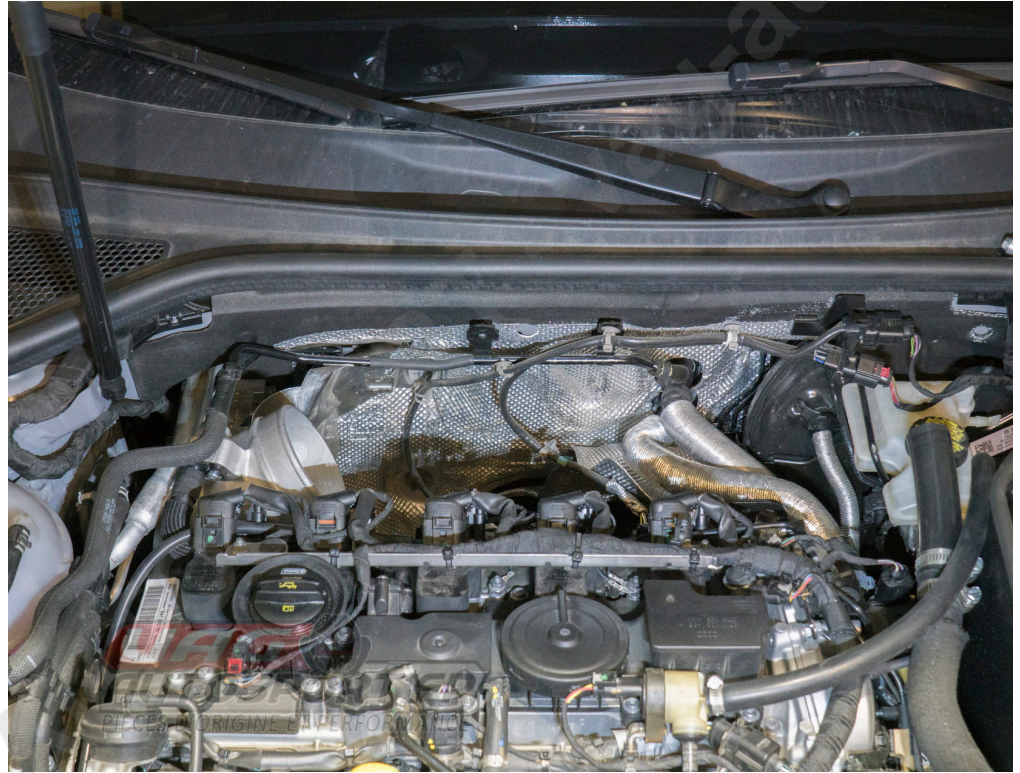
*The provided spacer is for the intake mounting point.
This may or may not be needed depending on your
intake system.

NOTES

Vehicle used in this guide is a 2018 Audi RS3. Always make sure the car is safe to work on. Do not work on the car until it has cooled down. We do not accept any liability for incorrect installation or damage during the install.

STEP 1

Remove the air intake.



STEP 2

Remove the front passanger side wheel



STEP 3

Remove the wheel well liner



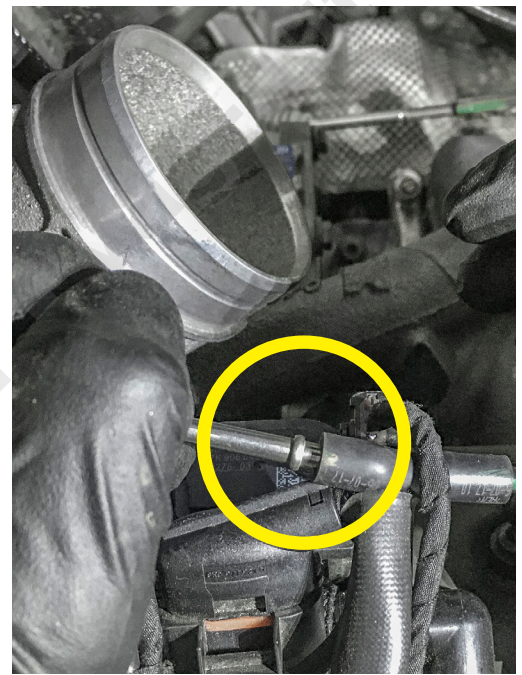
STEP 4

Remove the belly pan.



STEP 5

The vacuum line on the stock turbo inlet needs to be disconnected from the wastegate and vacuum line on the motor

**STEP 6**

Bolt to be removed; it attaches the turbo outlet pipe to the motor.



STEP 7

Remove the T30 screw holding the turbo outlet pipe to the motor.

**STEP 8**

Separate the turbo outlet pipe and intercooler hose by loosening the clamp.



STEP 9

Losen the clamp that connects the turbo and turbo outlet pipe.

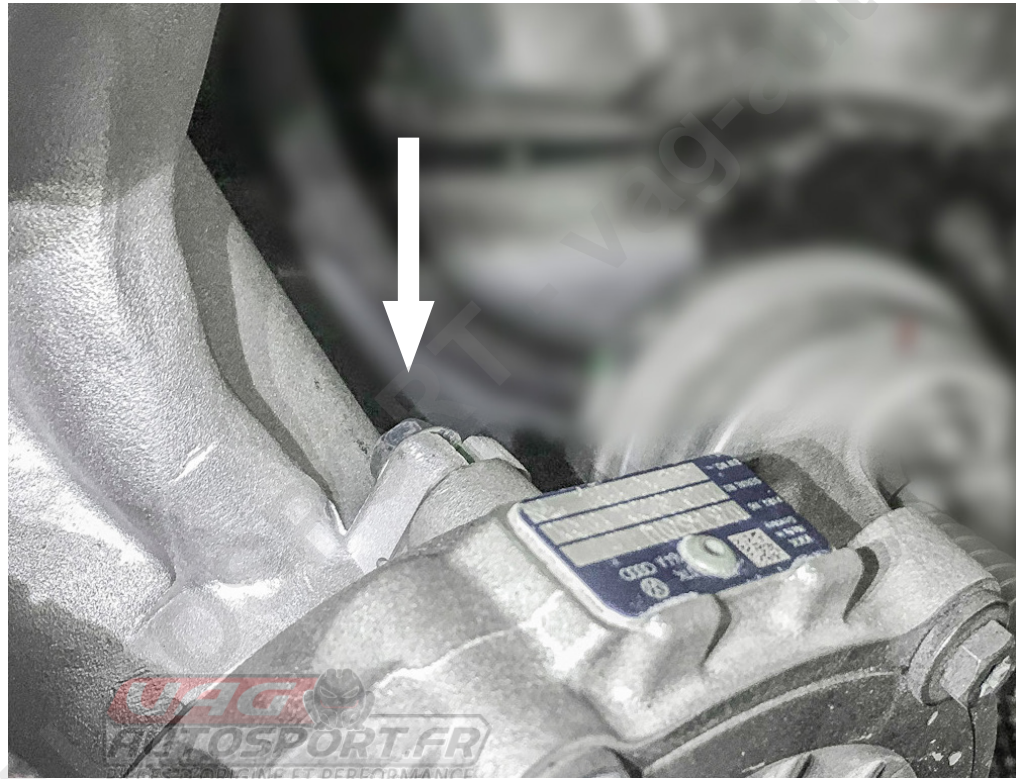
**STEP 10**

Remove the turbo outlet pipe



STEP 11

Locate the upper T30 Torx on the upper side of the turbo inlet. Remove the screw.

**STEP 12**

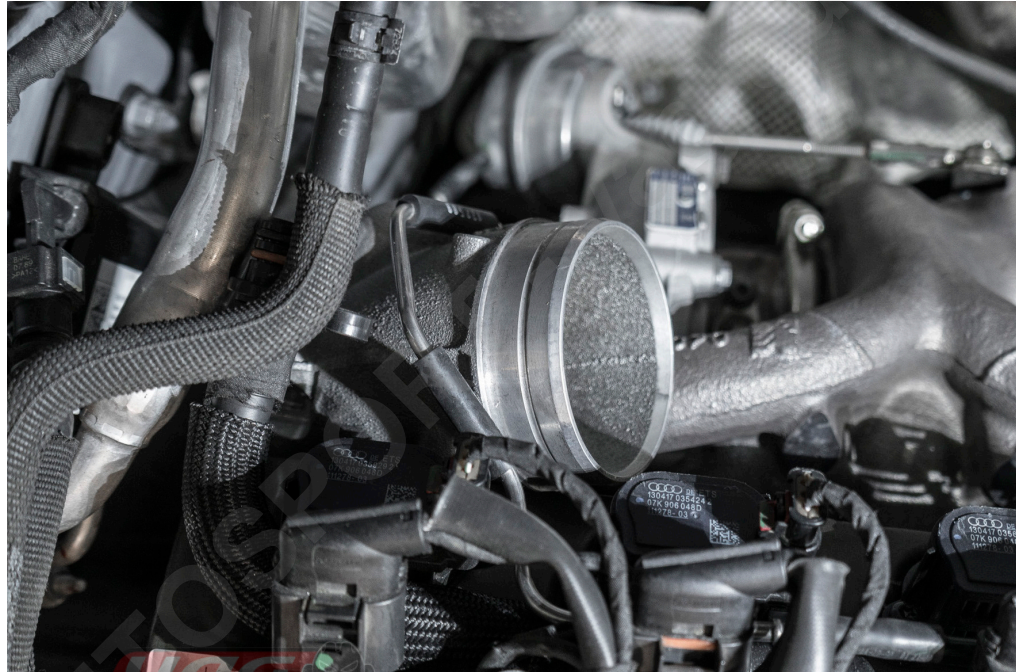
Remove the lower T30 screw holding the inlet pipe to the turbo.



STEP 13

Now that the inlet is loose you can carefully lift it up.

In order to remove the PCV hose from the turbo inlet you will need to use a hacksaw or dremel to slot the screw



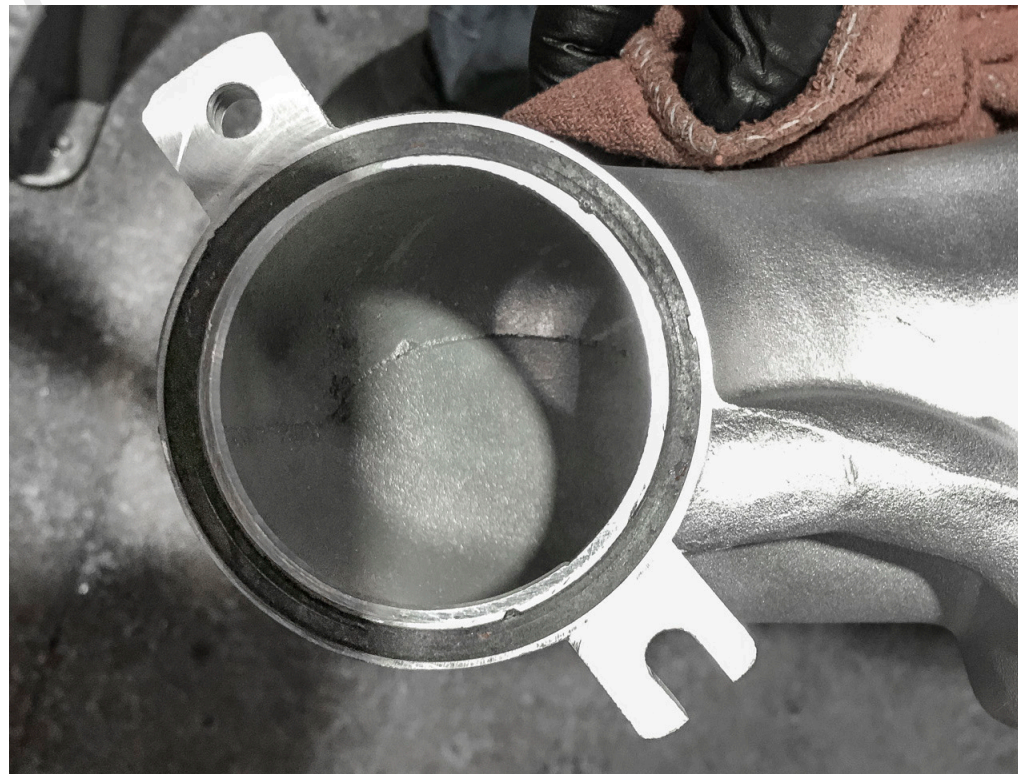
STEP 14

CTS turbo inlet vs OEM



STEP 15

Transfer the metal gasket from the OEM turbo inlet to the CTS turbo inlet.



STEP 16

Install the CTS turbo inlet pipe.

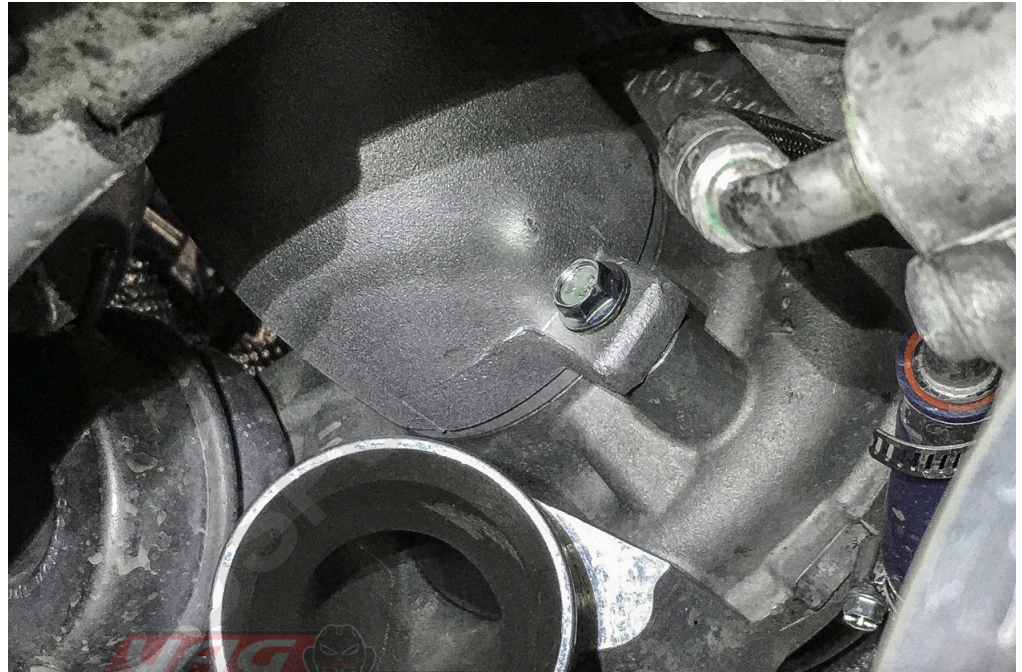
**STEP 17**

With the supplied 10mm screw install on the upper mounting point of the turbo inlet.



STEP 18

Check that the inlet is correctly seated. Using the provided 10mm screw install and tighten.



AUTOSPORT.FR
PIÈCES D'ORIGINE ET PERFORMANCE

STEP 19

Using the provided hose connect the one end to the wastegate.



STEP 20

Install the the PCV hose and install with provided 10mm bolt.

**STEP 21**

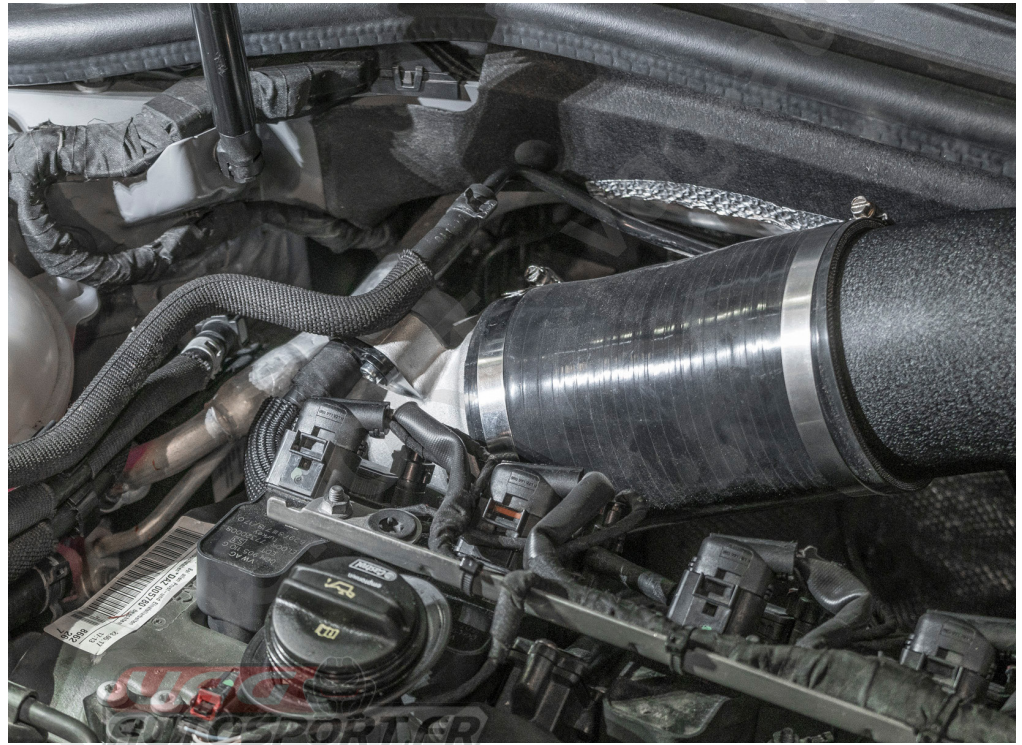
Using the provided hose mender connect the hose routed from the wastegate to the OEM connection.



STEP 21

Re assemble the turbo outlet pipe, intercooler hose, belly pan, wheel well liner, wheel and intake.

YOU are done!



PIÈCES D'ORIGINE ET PERFORMANCE