

X-Brace Chassis Reinforcement

**034 MOTOR SPORT**

The beautifully-crafted X-Brace is a direct, bolt-in upgrade for both B8 and B8.5 chassis vehicles, and offers more direct and consistent steering feel, and better handling, without sacrificing comfort.

About This Guide

This Install Guide documents the installation process on a B8.5 Audi S4. There may be minor differences depending on specific vehicle, market, options, etc.

Installation Spiciness Rating: MEDIUM



Installation of your 034 X-Brace Chassis Reinforcement is a straightforward process that will take approximately 1 hour to complete.

Supplied Parts:

- 034 X-Brace Billet Aluminum Chassis Reinforcement
- (2x) Modular X-Brace Inserts
- (4x) M10 Screws
- (4x) M5 Screws
- (4x) M5 Washers

Tools Needed:

- Torx T25 bit
- 4mm Allen bit
- 6mm Allen bit
- Flathead Screwdriver
- 19mm Wrench
- 10mm Socket
- 18mm Socket
- 14mm Triple-square Socket
- Torque Wrench

Getting Started

Confirm you have received all the parts included with your purchase by reading the complete guide, if there are missing components, please contact:
customerservice@034motorsport.com

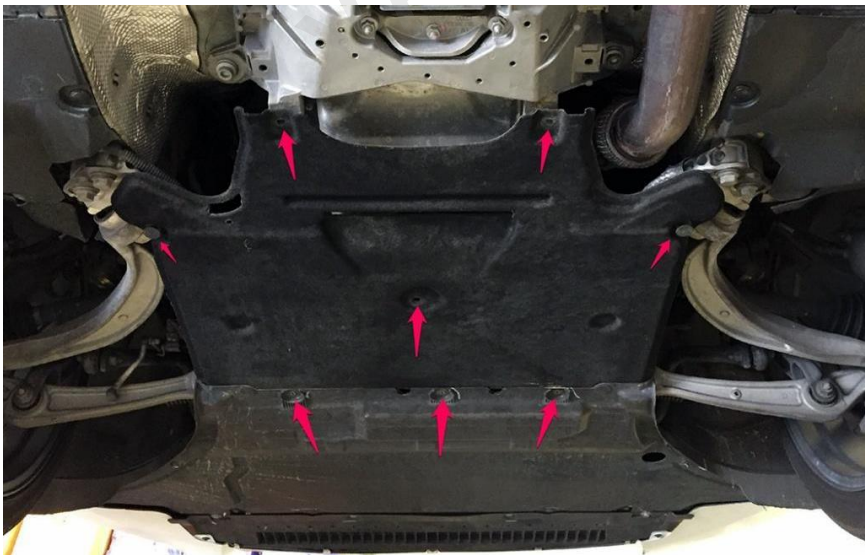
Install Steps

Step 1

Raise the vehicle securely on jackstands or a lift, to access the front subframe. Do not perform this work using ramps, or with any weight on the wheels!

Step 2

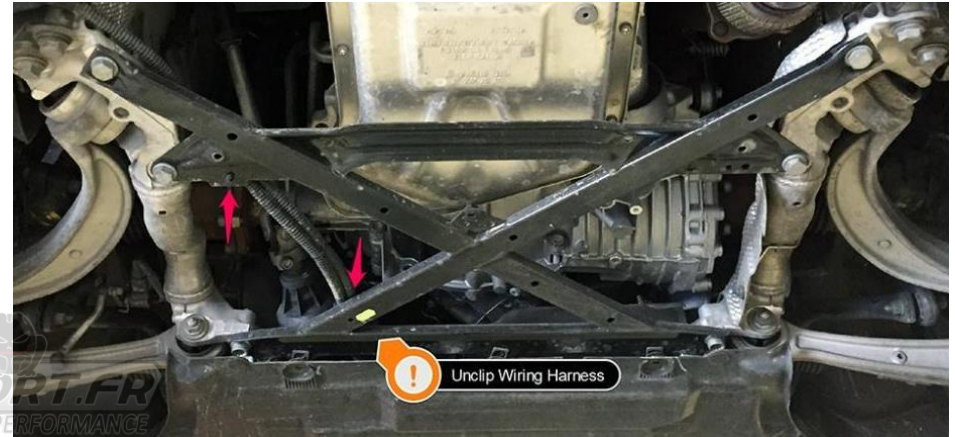
Using your T25 bit and a flathead screwdriver, remove the six T25 Torx screws and two plastic rivets securing the undercarriage tray, shown with arrows below.



Step 3

B8.5: Remove the two plastic factory clips securing the power steering cooler lines to the stock subframe brace.

B8: Use a 10mm socket to remove the nut securing the power steering cooler to the subframe brace.



Step 4

Support the subframe brace with one hand to ensure that it doesn't fall on you. Using an 18mm socket and 14mm triple square, loosen the bolts that attach the subframe brace.



Step 5

Remove the factory subframe brace and set aside.

B8: Using a 19mm wrench, remove the power steering cooler hose bushing from the subframe brace and transfer it over to the matching hole on the 034Motorsport X-Brace.

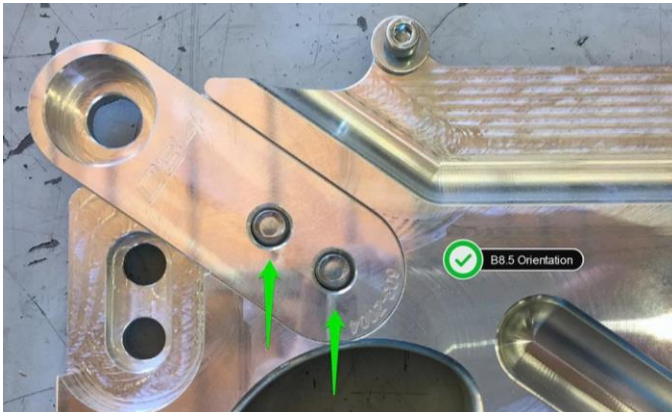


Step 6

Install the Modular X-Brace Inserts.

B8: The inserts should be installed straight up and down.

B8.5: The inserts should install diagonally, as pictured below. Using a 6mm Allen, torque the provided screws to **55 Nm**.



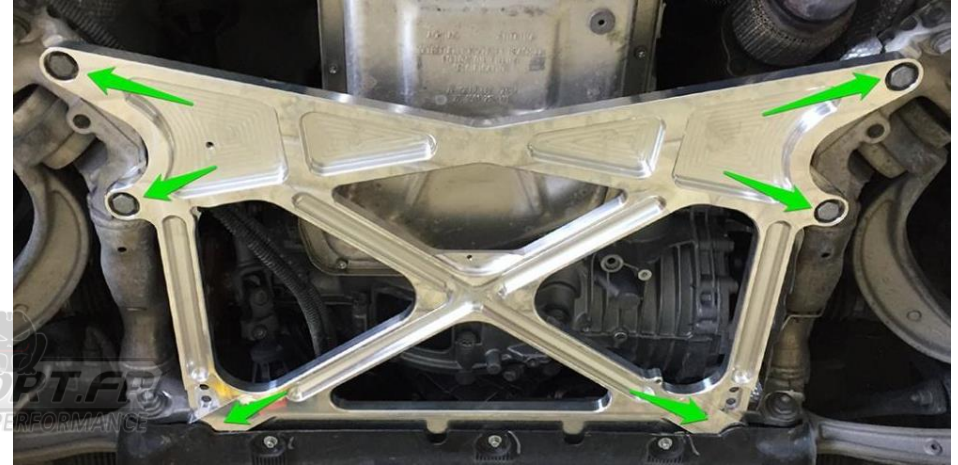
Step 7

Install the 034Motorsport X-Brace using new bolts.

B8: Torque the six M12 hex head bolts to **90 Nm + 135***.

B8.5: Torque the four M12 hex head bolts to **90 Nm + 135***.

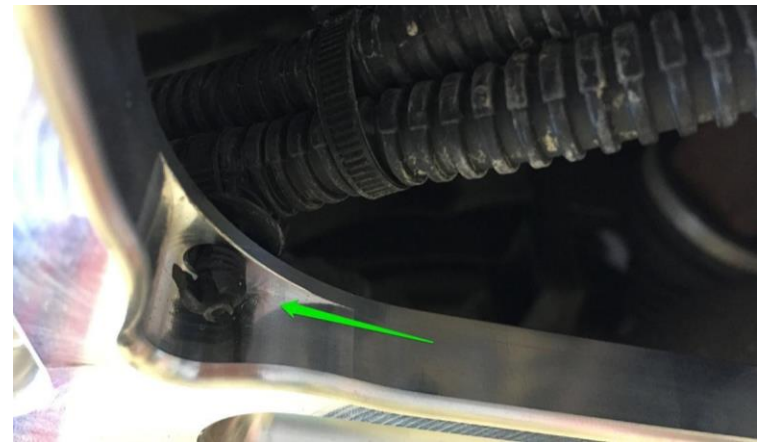
Torque the two M12 triple-square bolts to **90 Nm + 90***.



Step 8

Secure the power steering cooler hoses removed in Step 3.

B8: Attach using M10 nut.



Step 9

Reinstall the undercarriage tray. Secure using two of the stock T25 Torx screws(rear), two plastic rivets, (sides) and four of the supplied M5 screws and washers (front, center, blue Loctite recommended), as pictured below.

**Step 10**

Lower your vehicle and enjoy the upgrade! You should notice more precise steering with improved chassis feedback.

