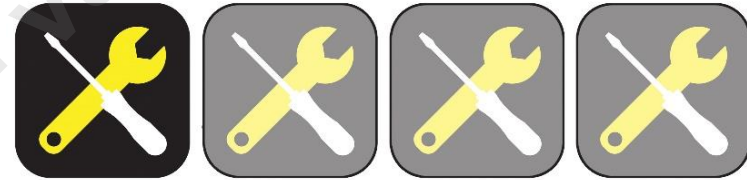


Rear Subframe Mount Inserts for B8/B8.5 Audi
A4/A5/Allroad Quattro

**034 MOTOR SPORT**

034Motorsport's Rear Subframe Insert Set for the Audi B8/B8.5 chassis is designed to minimize drivetrain movement and improve overall handling by locking down the rear subframe. By design, the billet 034Motorsport inserts fill the voids of the factory rubber mounts and limit subframe shifting during weight-transferring maneuvers.

Installation Spiciness Rating: MILD



Installation of your 034Motorsport Rear Subframe Insert Set is a straightforward process that will take approximately 90 minutes to complete.

Supplied Parts:

- (2x) 034 "forward" rear subframe inserts
- (2x) 034 "rearward" rear subframe inserts

Tools Needed:

- 18mm Socket
- 16mm Socket
- T20 Torx Bit
- Pry Bar
- Torque Wrench
- Silicone Grease

About This Guide

This Install Guide documents the installation process on an B8 Audi 44. There may be minor differences depending on specific vehicle, market, options, etc.

This guide covers one side, repeat for other side of the car.

Getting Started

Confirm you have received all the parts included with your purchase by reading the complete guide, if there are missing components, please contact:

customerservice@034motorsport.com

Install Steps**Step 1**

Lift the car to access the rear subframe.

Step 2

Using an 18mm Socket, remove the rear bolt securing the rear subframe to the chassis.

**Step 3**

Once the subframe bolt is removed, use a small pry bar to separate the factory washer from the rubber bushing.

**Step 4**

Remove the factory washer and set aside.

**Step 5**

Apply silicone grease to the insert as pictured below.



Step 6

Align the 034Motorsport Rear Subframe Insert (601-0037) with the voids in the factory subframe bushing.

**Step 7**

Install subframe bolt using an 18mm Socket. **Note:** We recommend replacing the original subframe bolts with new pieces, as they are stretch bolts that are intended for a one-time use.

**Step 8**

Torque new subframe bolt to **115 Nm + 90°**. If you opt to reuse the stock bolts, torque them to **120 Nm with Blue Loctite**.

**Step 9**

Using a T20 Torx driver, remove the two bolts securing the rear subframe cover.



Step 10

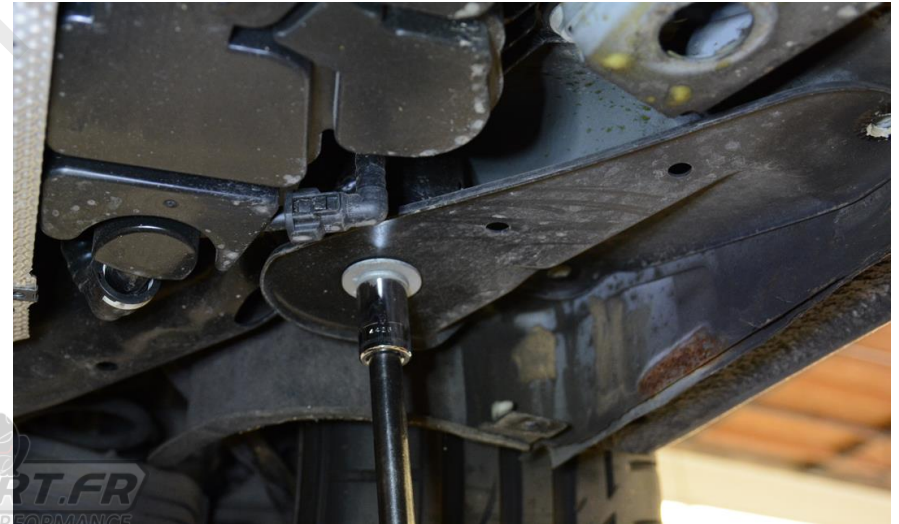
Using a flathead screwdriver, release the clips securing the rear subframe cover to the underbody.

**Step 11**

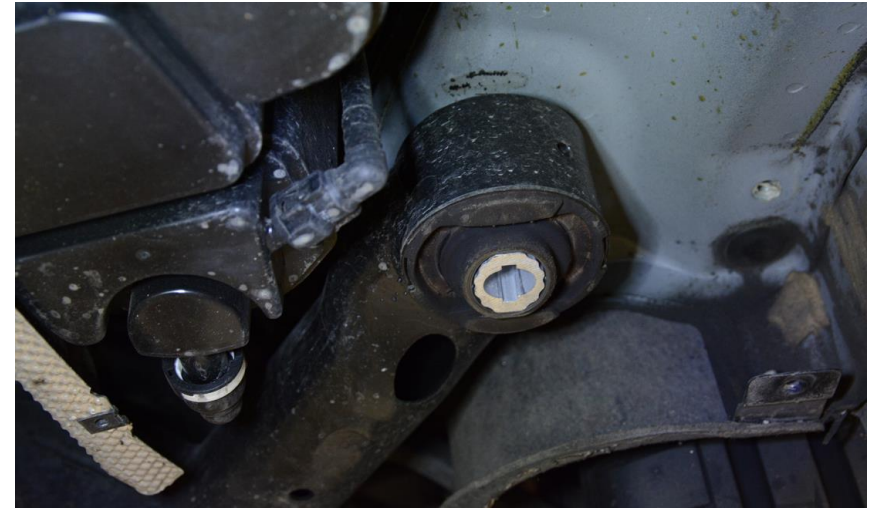
Using a 16mm Socket, remove the bolts securing the subframe mount bracket to the chassis.

**Step 12**

Using a 18mm socket, remove the final bolt securing the rear subframe bracket to the subframe bushing.

**Step 13**

With the support bracket removed, the subframe bushing should be exposed and appear as the picture below.

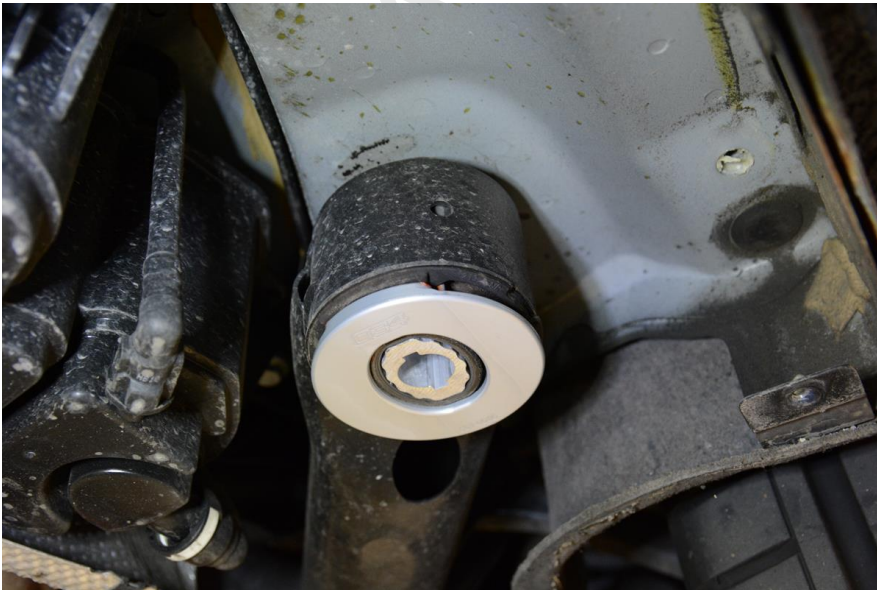


Step 14

Apply silicone grease to the insert as pictured below.

**Step 15**

Align the 034Motorsport Front Subframe Insert (601-0036) with the voids in the factory subframe bushing.

**Step 16**

We recommend replacing the factory stretch bolts when installing subframe inserts. However, if you choose to reuse the existing subframe bolts, apply some blue loctite to ensure they stay put.

**Step 17**

Reinstall the subframe mount bracket and bolt, tightening just enough to allow for alignment of the two additional bolts.

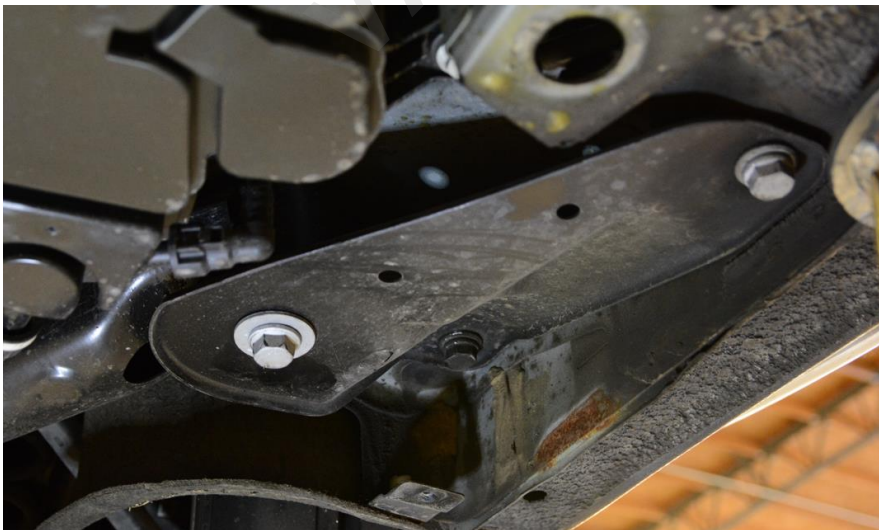


Step 18

The support bracket should be snug, but with enough play to align the remaining 2 bolt holes to the chassis.

**Step 19**

Align the subframe mount bracket and reinstall the two 16mm bolts. Torque the 16mm bolts **55 Nm**.

**Step 20**

Torque new subframe bolt to 115 Nm + 90° Turn. **If you opt to reuse the stock subframe mount bolt, torque to 120 Nm with Blue Loctite.**

**Step 21**

Slide the rear subframe cover back into place, and secure using the two T20 Torx screws.



Step 22

Double-check the installation, and verify that everything is torqued to spec.

Step 23

Lower the vehicle from the lift or jackstands.

Step 24

You are done. Enjoy the upgrade.

