

B9 A4 Density Line Motor Mount Pair**034 MOTORSPORT**

034Motorsport's Density Line Mounts are the new standard in comfort and performance. Our mounts are designed with performance in mind and manufactured from higher-durometer rubber compared to stock for increased performance and durability, without sacrificing comfort. Density Line Mounts are void-free and fluid-free, eliminating the slop associated with the factory mounts, resulting in improved shifting feel and driving dynamics.

Installation Spiciness Rating: MEDIUM

Installation of your 034Motorsport Density Motor Mount Pair is a straightforward process that will take approximately 4 hours to complete.

Supplied Parts:

- (1x) Left-side density motor mount
- (1x) Right-side density motor mount

Tools Needed:

- 13mm Socket
- 10mm Socket
- M14 triple-square bit
- M10 triple-square bit
- T25 Torx bit
- Phillips Screwdriver
- Flathead Screwdriver
- Snips/Scissors

Getting Started

Confirm you have received all the parts included with your purchase by reading the complete guide, if there are missing components, please contact:

customerservice@034motorsport.com

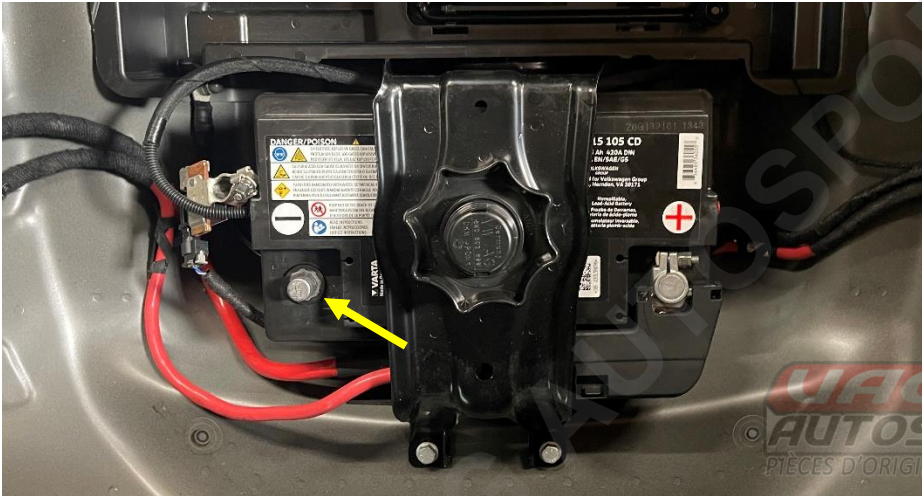
About This Guide

This Install Guide documents the installation process on a B9 Audi A4. There may be minor differences depending on specific vehicle, market, options, etc.

Install Steps

Step 1

Open your trunk and lift the trunk cover. Disconnect the negative battery terminal using a 10mm socket.



Step 2

Open hood to access the engine bay.



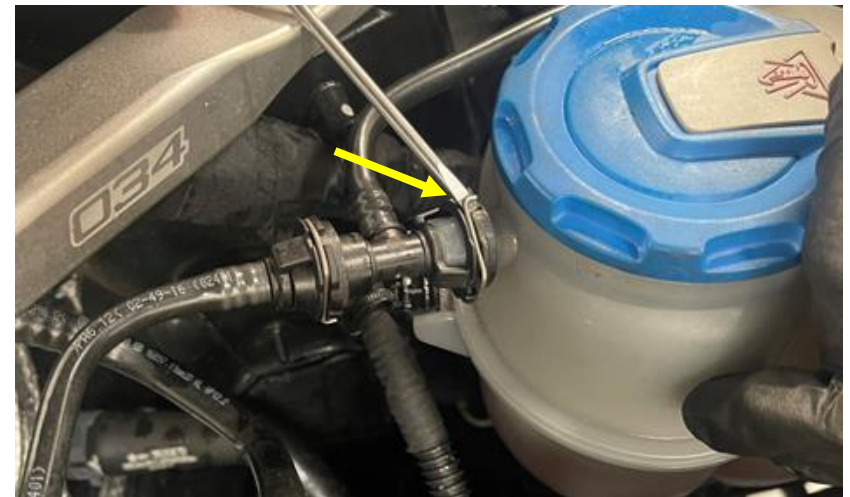
Step 3

Unclip the coolant line from the reservoir.



Step 4

Using a small flathead screwdriver, remove the retaining clip from the back of the coolant reservoir.



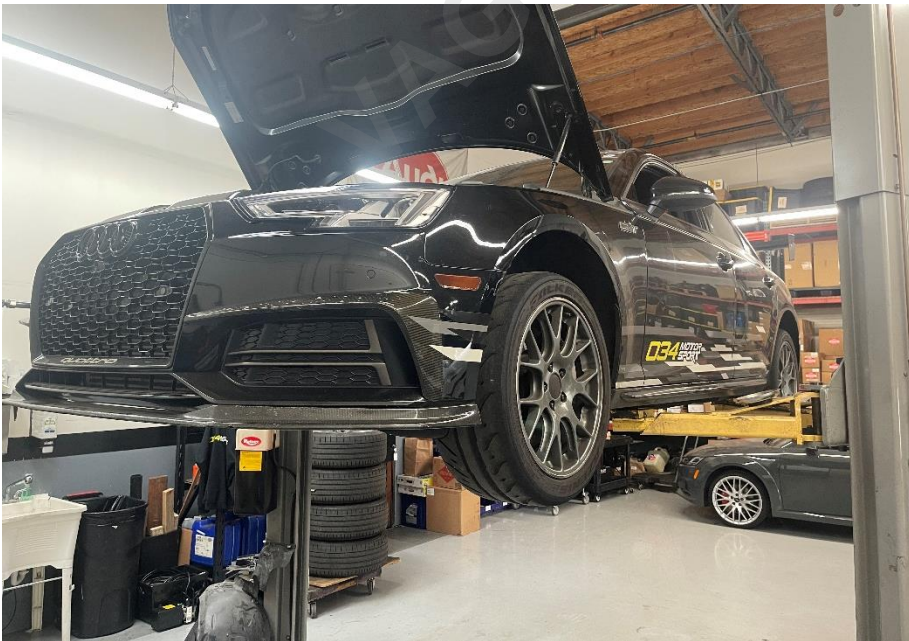
Step 5

Disconnect the coolant line from the reservoir.



Step 6

Lift the car to access the underside.



Step 7

Remove the front wheels.



Step 8

Using a 10mm socket, remove the plastic axle guard.



Step 9

Using a 10mm socket and T25 Torx, remove the hardware from the front wheel liners and set them aside.



Step 10

Use the same tools to remove the front, lower wheel liner.



Step 11

Using a 13mm socket, T25 Torx, and Phillips screwdriver to remove both underbody covers.



Step 12

Using a 10mm socket, loosen the hose clamp on the turbo charge pipe.



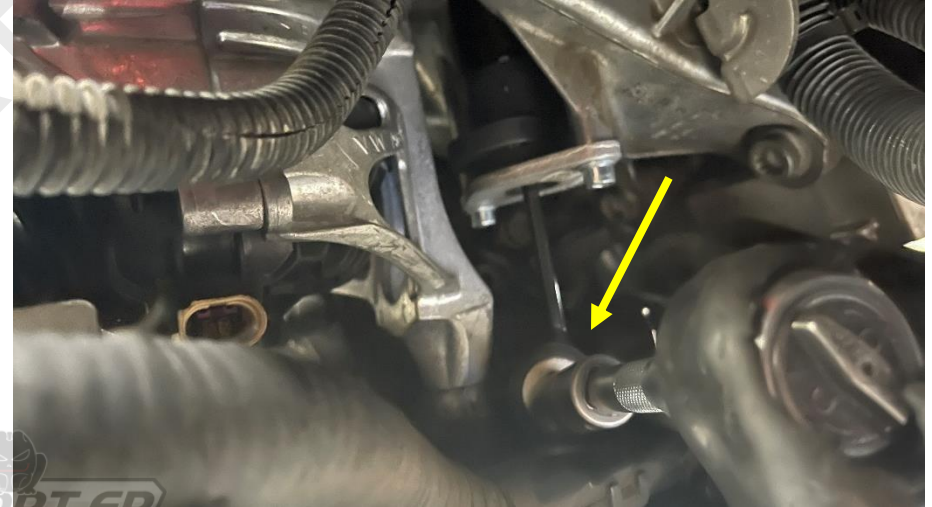
Step 13

Using snips, cut the zip ties holding the lower harness to the bracket on the subframe.



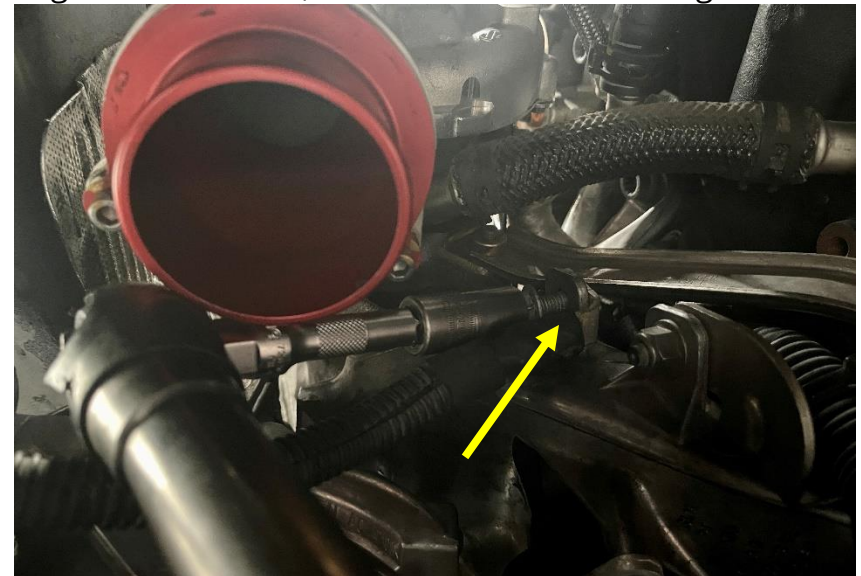
Step 14

Using a 13mm socket, remove the bolt from the engine support bearings.



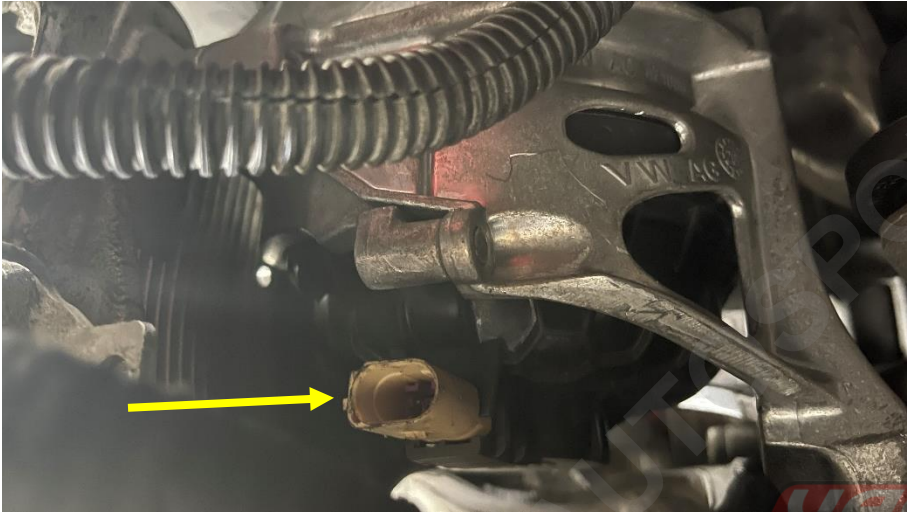
Step 15

Using a 13mm socket, remove the nut from the ground wire.



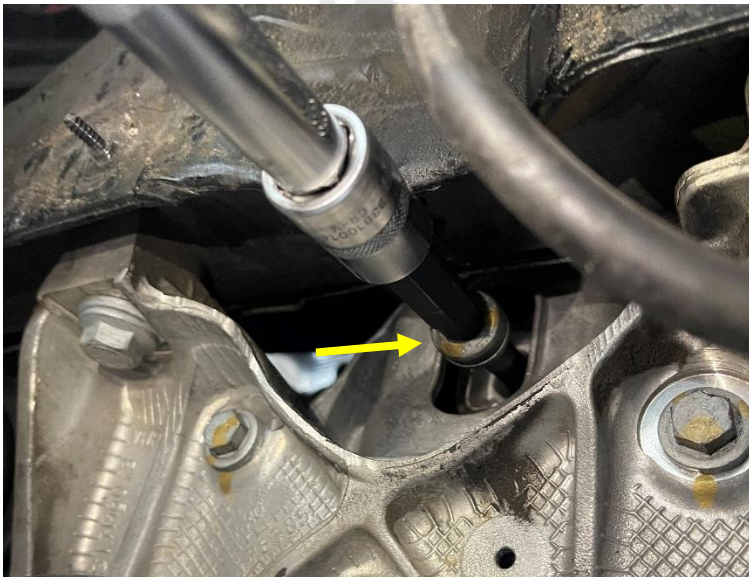
Step 16

Disconnect the harness plugs from the motor mounts.



Step 17

Using an M14 triple square, remove the bolt securing the mount to the motor.



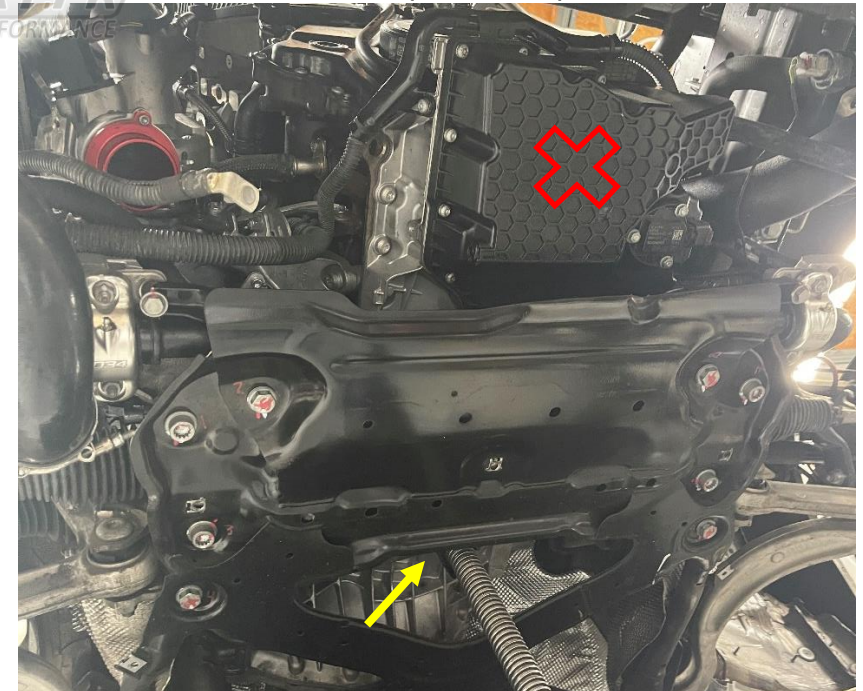
Step 18

Using a 13mm socket, remove the nuts from the transmission brace.



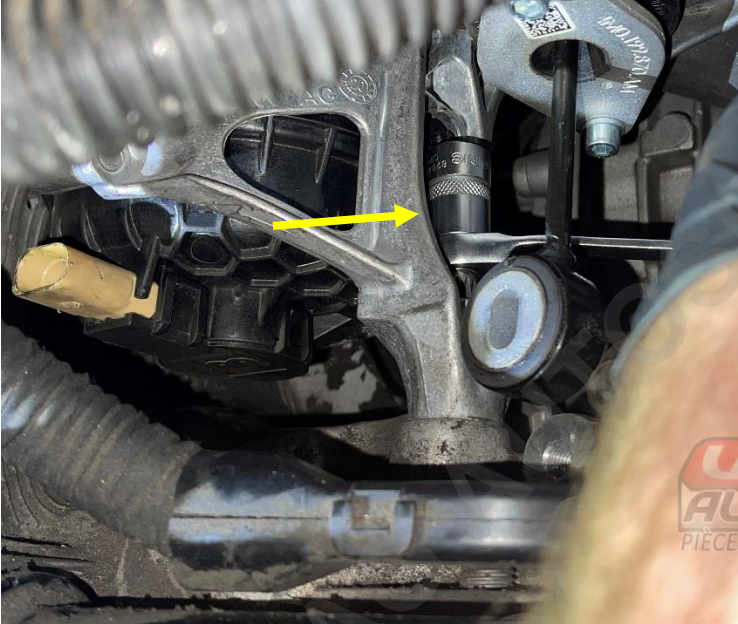
Step 19

Use a pole jack, or similar, to support the engine at the transmission, as the plastic oil pan will break.



Step 20

Using a 10mm triple square, remove the bolt securing the mount to the subframe.

**Step 21**

Using a 13mm socket, remove the side bolts securing the mount to the subframe bracket.

***Step 22***

We had some issues removing the factory driver's side mount, due to an aftermarket intercooler. We had to loosen the hose clamps from the intercooler pipe and remove it.

**Step 23**

One at a time, remove the factory motor mounts and swap in the 034 motor mounts.



Step 24

Torque the motor mount-to-subframe hardware to **30Nm**.

**Step 25**

To make the holes align, the engine support bearing may need to be lengthened by backing it out a few turns.

**Step 26**

Torque the bolt securing the motor to the mount to **90Nm + 90°**.

***Step 27***

Reinstall the intercooler pipe, if you had to remove it.

Step 28

Connect the harness plugs to the 034 motor mounts.

Step 29

Reinstall the nuts on the transmission brace.
Torque to **24Nm**.

Step 30

Reinstall the ground wire.

Step 31

Secure the wiring harness with new zip-ties.

Step 32

Reinstall the turbo charge pipe to the turbo.

Step 33

Reinstall both underbody covers.

Step 34

Reinstall the front, lower wheel liners.

Step 35

Reinstall the main wheel liners.

Step 36

Reinstall the plastic axle guards.

Step 37

Put the front wheels back on.

Step 38

Reconnect the coolant line and secure it with the retaining clip. Put the line back into its pinch clip.

Step 39

Reconnect the battery terminal.

Step 40

You are done! Enjoy the added performance over the wimpy old factory mounts.

