

Spherical Dogbone Mount, 8S Audi TT RS & 8V Audi RS3

**034 MOTOR SPORT**

034Motorsport's Spherical Dogbone Mount and Upper Mount Insert for 8S Audi TT RS & 8V Audi RS3 is the new standard in performance and durability. This dogbone mount was engineered with performance in mind, manufactured from billet aluminum, and features a genuine Aurora Spherical Bearing to maintain proper articulation and reduce NVH transfer.

Installation Spiciness Rating: MILD



Installation of your 034Motorsport Spherical Dogbone Mount is a straightforward process that will take approximately 1 hour to complete.

Required Parts:

- **034Motorsport Billet Aluminum MQB Dogbone Mount Insert (Part number 034-MQB-DBMI or equivalent) is required for this installation.**

Supplied Parts:

- 034 Spherical MQB Dogbone Mount
- 034 Dogbone Mount Upper Insert
- OEM Replacement Bolts (3)

Tools Needed:

- 21mm Socket
- 18mm Socket
- 13mm Socket
- T45 Torx Bit
- T25 Torx Bit
- Pry Bar
- Torque Wrench

About This Guide

This Install Guide documents the installation process on an 8S Audi TTRS. There may be minor differences depending on specific vehicle, market, options, etc.

Getting Started

Confirm you have received all the parts included with your purchase by reading the complete guide, if there are missing components, please contact:

customerservice@034motorsport.com

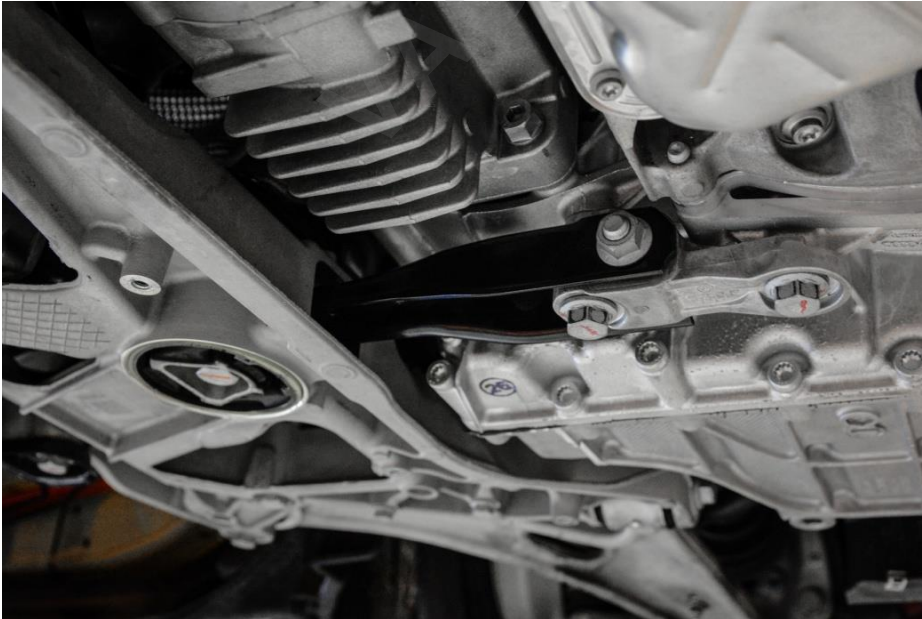
Install Steps

Step 1

Lift the car.

Step 2

Locate the factory dogbone mount securing the engine/transmission to the front subframe. It is located under the belly pan. You will need the T25 and T45 Torx to remove the belly pan.



Step 3

Using a 21mm Socket, remove the bolt securing the factory dogbone mount to the front subframe.



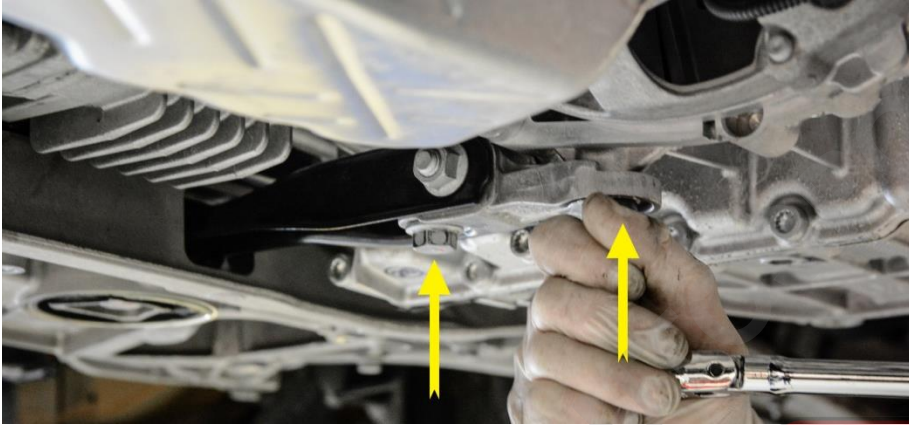
Step 4 (Optional)

Using a Flathead screwdriver, remove the dogbone mount insert if one has been installed previously. The lower dogbone mount insert is required with this product.

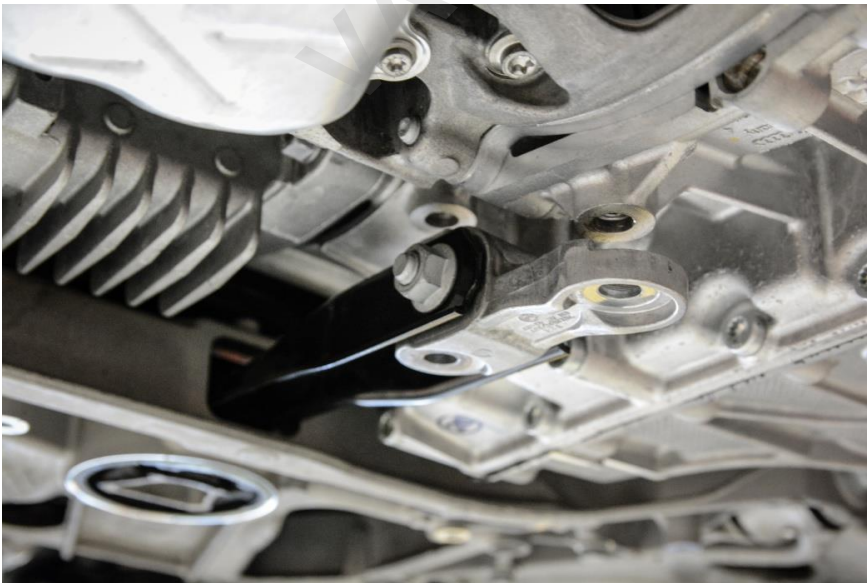


Step 5

Using an 18mm socket, remove the two bolts securing the factory dogbone mount to the transmission.

**Step 6**

Remove the factory dogbone mount from the vehicle by sliding forward and out of the front subframe.

**Step 7**

Remove the four M8 sway bar mounting bolts.

**Step 8**

Apply a light coating of grease on the 034-509-1035 MQB Upper Dogbone Mount Insert.



Step 9

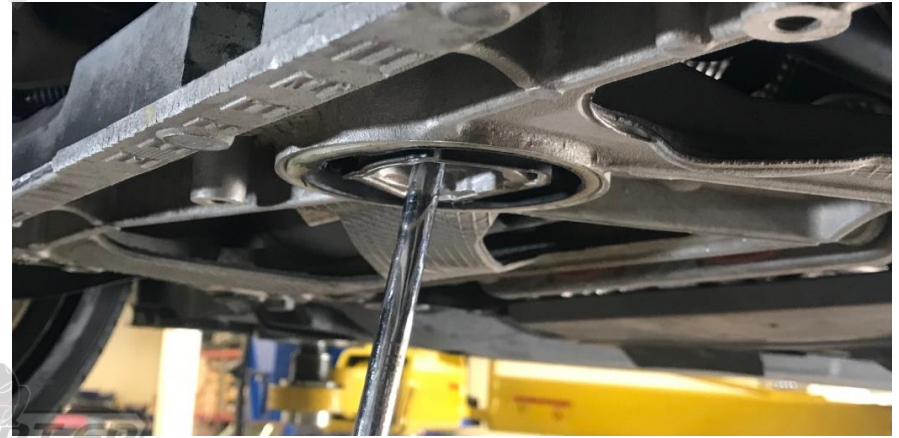
Lift the sway bar up and back to provide room to insert the insert.

**Step 10**

Position the upper insert in the front void of the upper bushing to prepare to install.

**Step 11**

Insert a large/long screw driver into the puck bolt hole and gently pry the upper bushing back to give room to insert the upper insert.

**Step 12**

While the upper puck is pried back, push down on the insert to fully seat it into position.



Step 13

This is how the insert should be positioned when fully inserted. The pendulum arm window should be unobstructed.



Step 14

Reinstall the sway bar mounting bolts and torque to **28Nm**.



Step 15

Apply a coat of grease to the tail end of the 034 Spherical Dogbone Mount to ease installation into the rubber bushing.



Step 16

Insert the tail end of the 034 Spherical Dogbone Mount into the front subframe and align front holes with those on the transmission.



Step 17

Loosely install the front two bolts securing the 034 Spherical Dogbone Mount to the transmission using the new supplied factory bolts.



Step 18

Reinstall Dogbone Mount Insert. Use a spare hand to move engine/transmission and align bolt hole in the front subframe with the 034 Spherical Dogbone Mount. Loosely install the new factory bolt supplied in the kit.



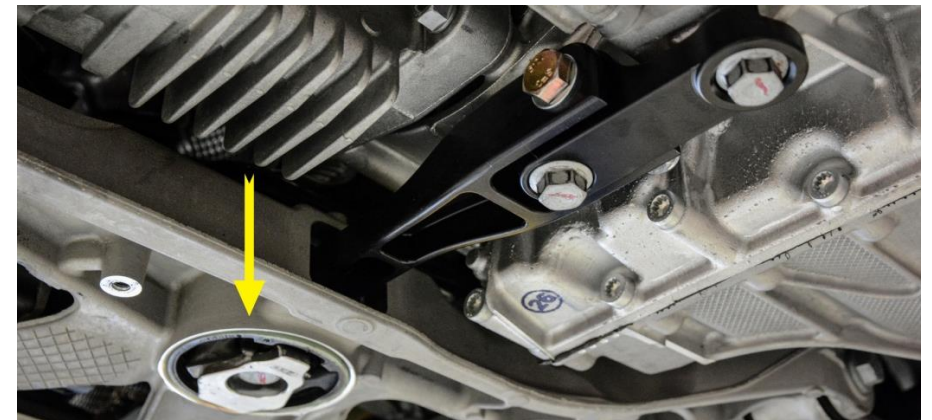
Step 19

Using an 18mm socket, torque the 2 supplied bolts securing the 034 Spherical Dogbone Mount to the engine/transmission to **50 Nm + 90°**.



Step 20

Using a 21mm socket, torque the new factory bolt securing the 034Motorsport Billet + Spherical Dogbone Mount to the front subframe to **130 Nm + 90°**.



Step 21

Reinstall the belly pan using T25 and T45 Torx bolts. Torque T45 Torx bolts to **23Nm**.

Step 22

Lower your vehicle.

Step 23

Enjoy the upgrade!

