

R8 Front Diff Insert Kit**034 MOTOR SPORT**

By filling small voids in the factory mounts, this insert set eliminates the associated drivetrain movement to ensure that you experience a more refined, connected driving experience, especially when applying power with throttle transitions. These billet aluminum parts will not pack or wear over time and offer a lasting performance improvement.

Installation Spiciness Rating: MILD

Installation of your 034 Front Diff Insert Kit is a straightforward process that will take approximately 1 hour to complete.

Supplied Parts:

- (2x) "front" mount inserts
- (1x) "rear" mount insert

Tools Needed:

- T30 Torx Driver
- 18mm Socket
- 16mm Socket
- 16mm Wrench
- 10mm Triple-square Socket
- Torque Wrench
- Flathead or pry tool

About This Guide

This Install Guide documents the installation process on a MK1 Audi . There may be minor differences depending on specific vehicle, market, options, etc.

Getting Started

Confirm you have received all the parts included with your purchase by reading the complete guide, if there are missing components, please contact:

customerservice@034motorsport.com

Install Steps**Step 1**

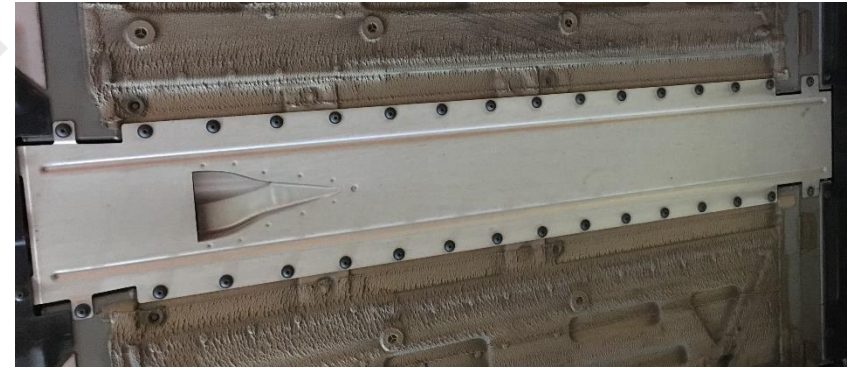
Raise the vehicle securely on jack stands, or a lift, to gain access to the front suspension.

**Step 2**

Using a T30 Torx, remove under tray below the front diff by removing the 10 screws. To remove the push pins, press the pins through, then use a flathead to remove the plug.

**Step 3**

Using a T30 Torx, remove the driveshaft under tray by removing the 32 screws.

**Step 4**

Use a jack to support the front differential.

Step 5

Using a 16mm socket and wrench, loosen the rear mount bolt.



Step 6

Using a 10mm triple-square, remove the four bolts holding the rear differential mount brace to the chassis.

**Step 7**

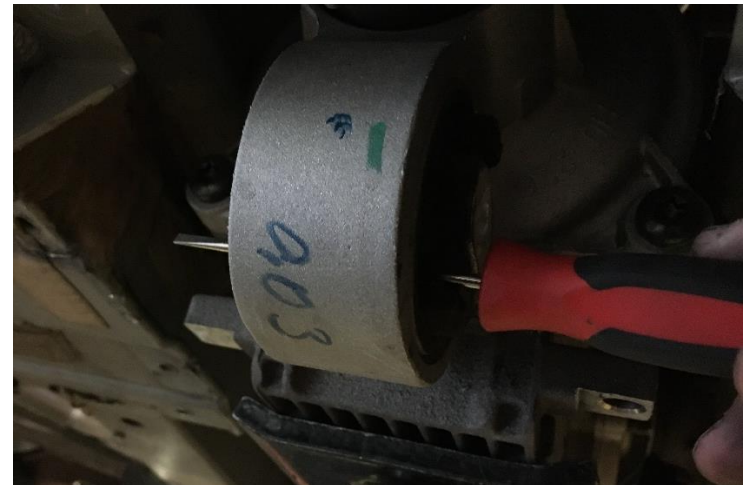
Using an 18mm socket, remove the two front differential mount bolts.

**Step 8**

Lower the differential to remove the rear mount through bolt and brace.

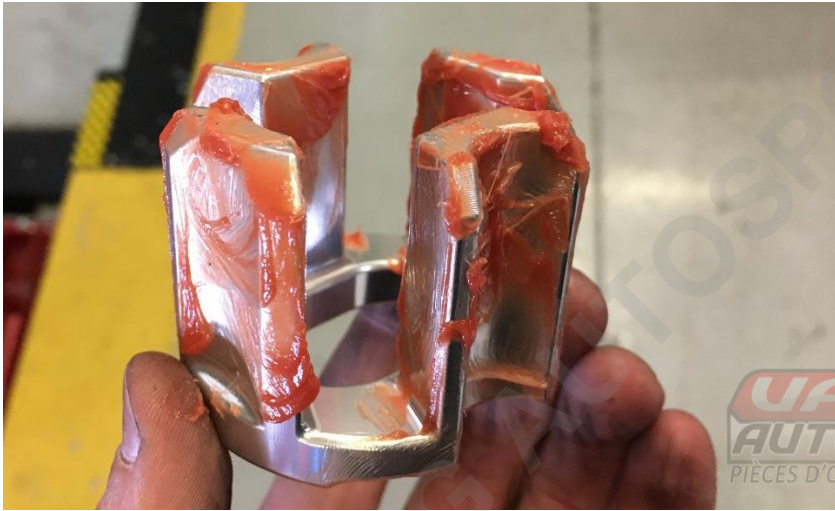
**Step 9**

To ease installation, use a screwdriver to poke through the voids in the bushings to clear the mold flashing.



Step 10

Grease the rear insert and slide it into the voids in the bushing until flush, the insert can be installed on the driver or passenger side with no difference in performance



*We show it here installed on the driver side.

Step 11

Grease the two front inserts and slide them into the front bushings.

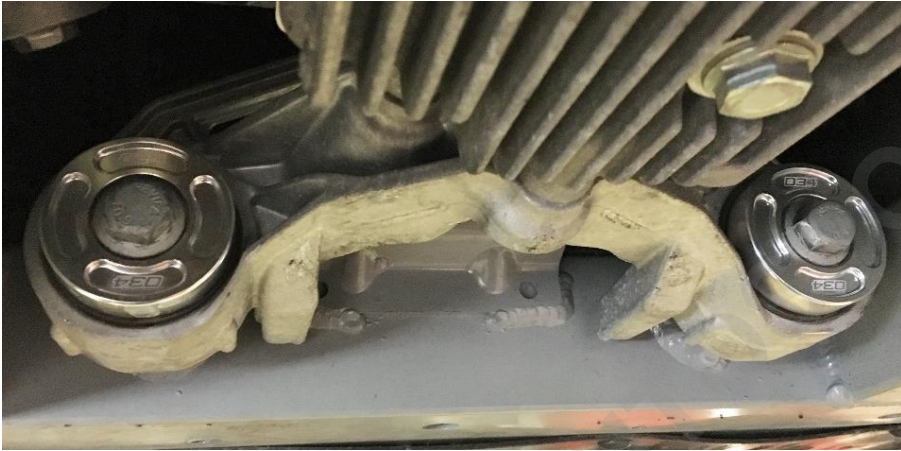
**Step 12**

Reinstall the through bolt on the rear bushing brace.



Step 13

Raise the differential back into place and snug the bolts.



Step 14

Remove the differential supports.

Step 15

With the car level, torque the triple-square bolts to **20Nm**.



Step 16

Torque the rear mount through bolt to **40Nm**.



Step 17

Torque the front bushing bolts to **95Nm**.



Step 18

Reinstall the driveshaft and differential undertrays. For the push pins on the front undertray, install the plug then insert the pin until it is flush.

Step 19

You're done. Enjoy the added rigidity from your front diff insert kit.

