

034Motorsport Dynamic+ Rear End Link Kit, MQB

**034 MOTORSPORT**

These end links were engineered with performance, and more importantly, strength and longevity, in mind. Manufactured from 304 stainless and zinc plated steel, for strength and long-lasting reliability.

Installation Spiciness Rating: MILD



Installation of your 034Motorsport Rear Sway Bar End Link Kit is a straightforward process that will take approximately 30 minutes to complete.

Supplied Parts:

- (2x) dynamic+ rod ends with hardware
- (2x) dynamic+ rod end bushings with jam nuts
- (2x) M10 nylon locking nuts
- (2x) M10 washers
- (1x) anti-seize packets

Tools Needed:

- 6mm triple square Allen
- 5mm Allen
- 13mm Wrenches
- 16mm Wrenches
- 17mm Wrenches
- Torque Wrench

About This Guide

This Install Guide documents the installation process on a 2016 Audi S3 and 2018 Audi RS3. There may be minor differences on other vehicles, depending on specific vehicle, market, options, etc.

Getting Started

Confirm you have received all the parts included with your purchase by reading the complete guide, if there are missing components, please contact:

customerservice@034motorsport.com

Assembly Steps

Step A

Open hardware packages.



Step B

Apply half packet of anti-seize to each rod end.



Step C

Run the jam nut down the shaft to disperse the anti-seize along the entire threaded portion.



Step D

Thread the two end link ends together.



Step E

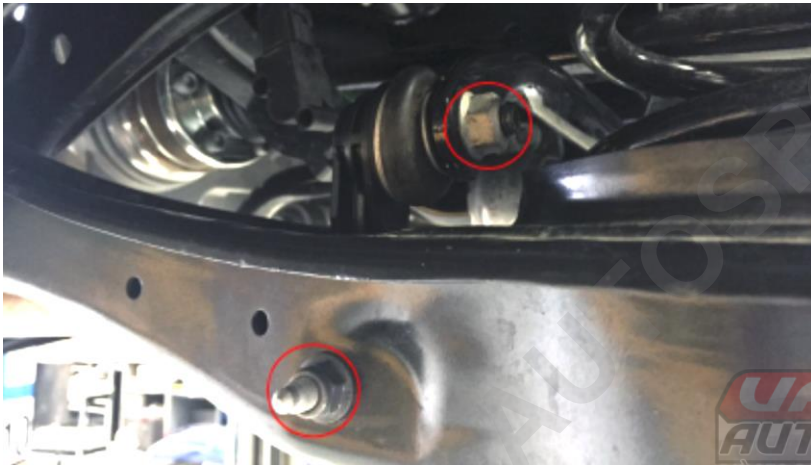
Add M10 washer and locking nut to ball joint end.



Installation Steps

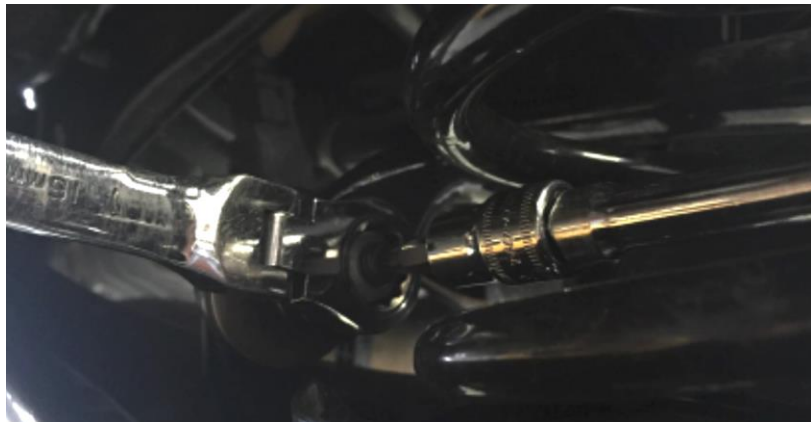
Step 1

Raise the vehicle securely on jack stands, or a lift, to gain access to the rear suspension.



Step 2

Using two 13mm wrenches, remove the bolt and nut securing the bottom of the end link to the lower control arm. Using a 16mm wrench and 6mm triple square, remove the nut securing the upper end link to the rear sway bar.



Step 3

Use the stock endlink length to set the initial length of the 034 endlink. It should be close to bottomed out.



Determine which setting you will be using on the sway bar and adjust the end link spacer orientation accordingly. The upper link orientation should be rotated 90 degrees from lower link. Lock jam nut to secure length.

Sway bar on soft setting



View of left side end link, from middle of car, looking outward

Sway bar on stiff setting



View of left side end link, from middle of car, looking outward

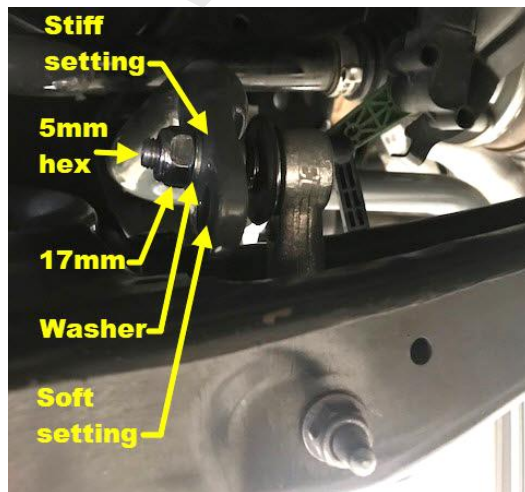
Step 4

Secure the lower end link to the control arm using the factory bolt and supplied M8 lock nut. Torque to **35 Nm**.



Step 5

With a 17mm wrench and 5mm Allen, secure the upper end link to the sway bar using the supplied M10 nut and washer. Torque to **45 Nm**.



Step 6

Repeat steps 2-5 for the opposite side.

Step 7

Enjoy the improved handling!

