

034Motorsport Track Spec Sway Bar Kit, B9 Audi A4/S4,
A5/S5, Allroad

**034 MOTOR SPORT**

Designed to further reduce body roll and enhance steering feel than a rear sway bar upgrade alone, 034Motorsport's Track Spec Sway Bar Kit is the ideal upgrade for those in search of confidence-inspiring handling on track.

Installation Spiciness Rating: SPICY



Installation of your 034Motorsport Track Spec Sway Bar Kit is a complex process. We recommend professional installation by an experienced Audi/Volkswagen specialist.

Supplied Parts:

- 034Motorsport Track Spec Front Sway Bar
- 034Motorsport Track Spec Rear Sway Bar
- Sway Bar Bushings (4)
- Sway Bar Mounting Brackets & Spacers
- Installation Hardware

Tools Needed:

- **Sockets** – 10mm 6-Point, 13mm 6-Point, 18mm 6-Point
- **Bits** - T25 Torx, T30 Torx, 14mm Triple Square
- **Wrenches** – 16mm Wrench (2)
- Torque Wrench, Extensions

Getting Started

Confirm you have received all the parts included with your purchase by reading the complete guide, if there are missing components, please contact:

customerservice@034motorsport.com

About This Guide

This Install Guide documents the installation process on a 2018 Audi S4. There may be minor differences depending on specific vehicle, market, options, etc.

Step 1

Using a T25 Torx bit, remove the single screw securing the 2 plastic splash guards together on each side. Retain all parts for reinstallation.



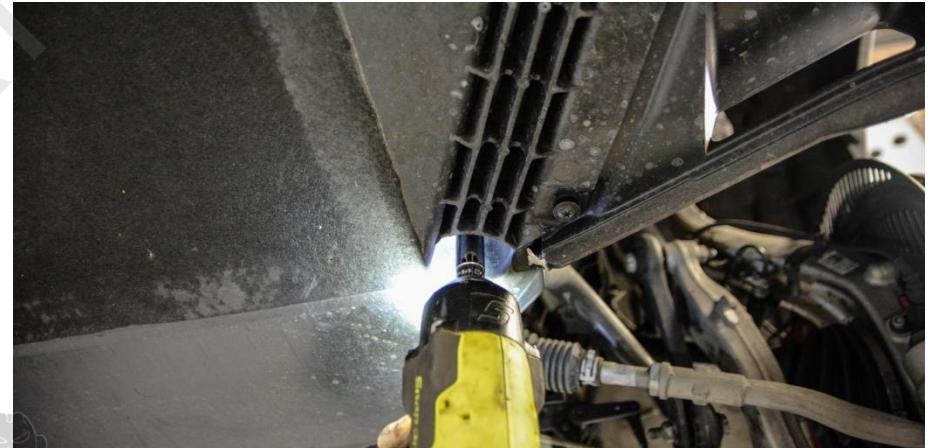
Step 2

Using a combination of T25 and T30 Torx bits, remove all screws securing underbody shield to the car.



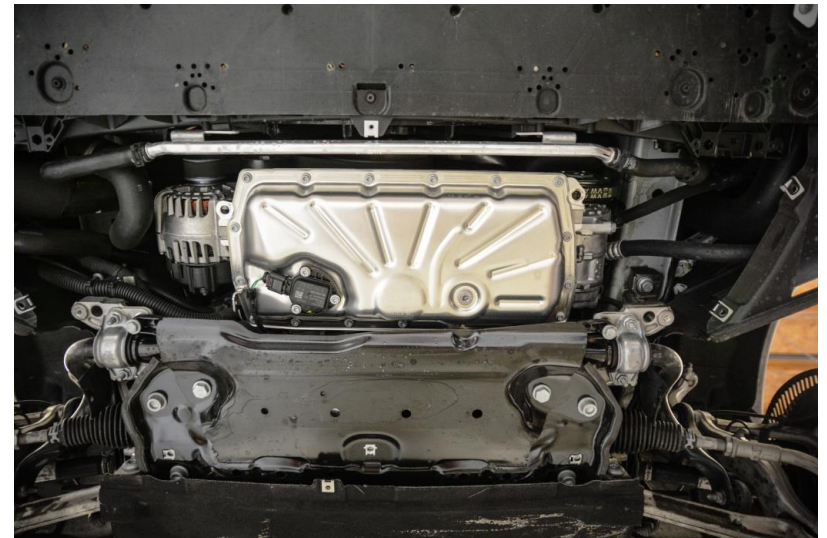
Step 3

Using a 13mm 6-Point Socket, loosen the two bolts securing the underbody shield to the chassis.



Step 4

The front underbody shield should now be free to remove from the car.



Step 5

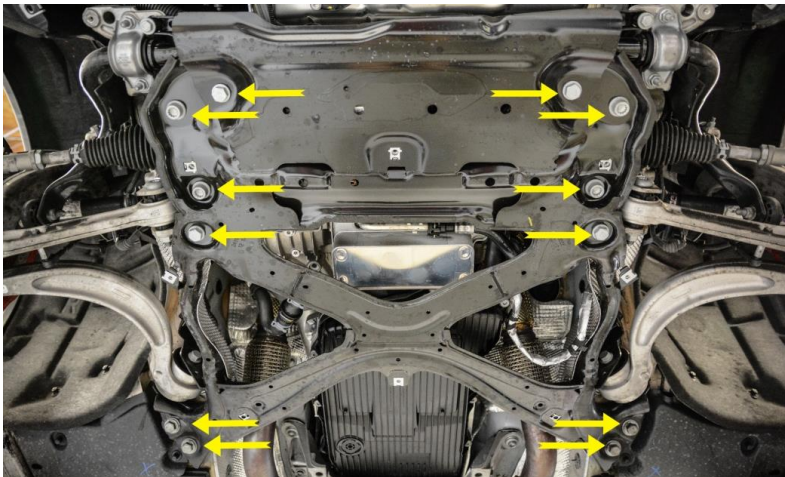
Using a combination of T25 and T30 Torx bits, remove the screws securing the rear portion of the underbody shield.

Retain all parts for reinstallation.



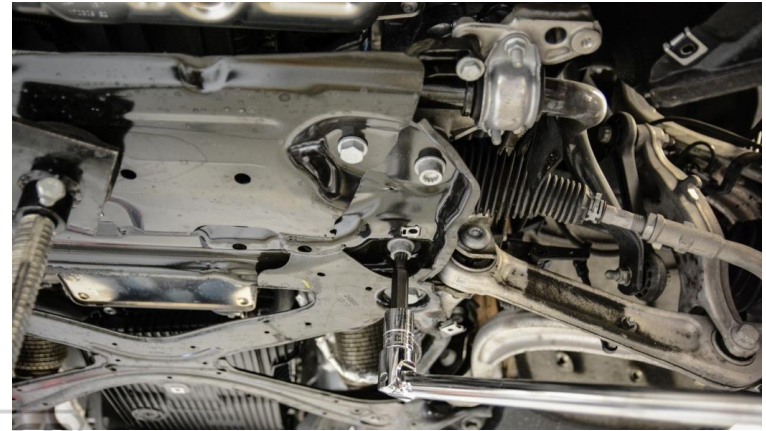
Step 6

There is a total of 14 bolts securing the front subframe to the chassis (12 seen in photo). Position a pole jack underneath the front subframe to prepare for lowering.



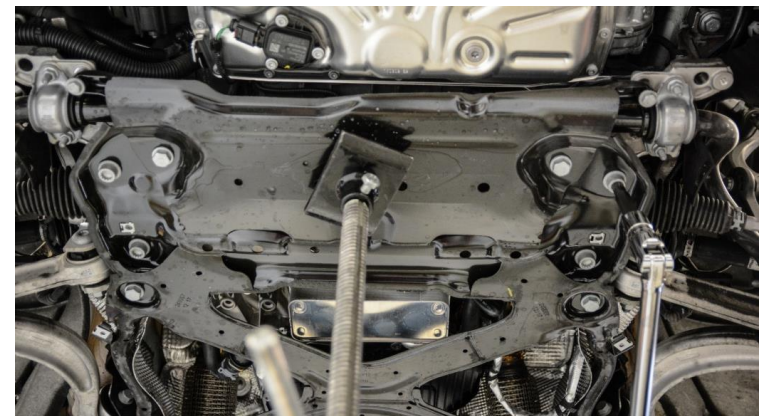
Step 7

Using a 14mm Triple Square bit, slowly remove the 2 bolts securing the subframe to the chassis near the front lower control arm.



Step 8

Ensure the pole jack is supporting the front subframe safely and securely. Once confirmed, use a 14mm Triple Square bit to remove the 2 bolts securing the subframe to the chassis located near the outer tie rods.



Step 9

Using an 18mm 6-Point Socket and breaker bar, slowly loosen and remove the 8 hex bolts securing the subframe to the chassis.



Step 10

Using a 13mm 6-Point Socket, slowly remove the 2 hex bolts securing the front of the subframe next to the sway bar mounting brackets.



Step 11

Using a 10mm 6-Point Socket, remove the splash shields from each wheel well to gain clearance when removing front sway bar end links.



Step 12

Using (2x) 16mm Wrenches, loosen and remove the bolt and nut securing each front sway bar end link to the front sway bar.



Step 13

Using 2 16mm Wrenches, loosen and remove the upper bolt and nut securing the front sway bar end link to the steering knuckle.



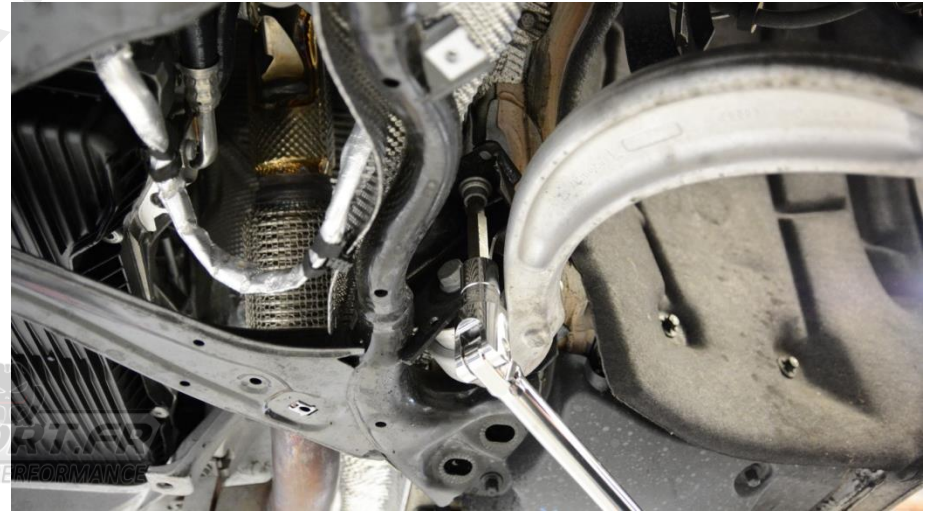
Step 14

Removing the upper sway bar end link bolt may take finesse. Remove bolt and front sway bar end link from each side of the vehicle.



Step 15

Using a 12mm Triple Square, remove the final 2 bolts securing the subframe to the chassis located above the rear lower control arms.



Step 16

Using a 10mm Wrench, remove the 2 nuts securing the heat shields to the front subframe.



Step 17

The front subframe should now be completely free from the vehicle. Carefully and slowly lower subframe from the vehicle ~6 inches to gain access to the front sway bar.



Step 18

Using a 13mm 6-Point Socket, loosen and remove the 4 nuts securing the front sway bar mounting brackets to the chassis.



Step 19

The front sway bar should now be completely free from the chassis. Slide down and gently pull away toward the front of the vehicle.



Step 20

Position the 034Motorsport Track Spec Front Sway Bar above the front subframe and preinstall the lower bolts and nuts for the sway bar end links using (2x) 16mm Wrenches.



Step 21

Grease and install supplied 034Motorsport poly sway bar bushings, then use a 13mm Socket to secure the billet sway bar mounting brackets to the chassis.

Torque to 40Nm + 90*.



Tip: Orient brackets with zerk fittings facing forward for easy greasing.

Step 22

The 034Motorsport Track Spec Front Sway Bar should now be snug against the chassis.



Step 23

Using a 16mm Wrench, install the upper front end link bolts and nuts securing the front end links to the steering knuckle.

Torque all end link bolts to 40Nm + 90*.



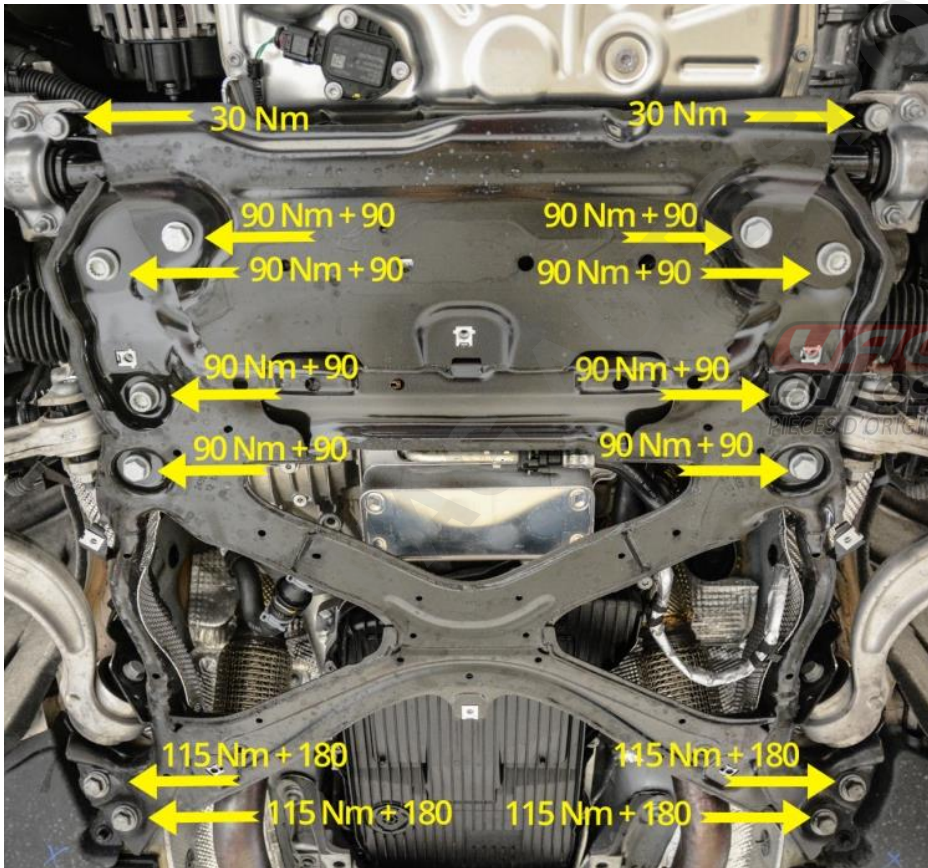
Step 24

Lift and align the front subframe on the chassis and carefully begin threading all subframe mounting bolts into their respective holes.



Step 25

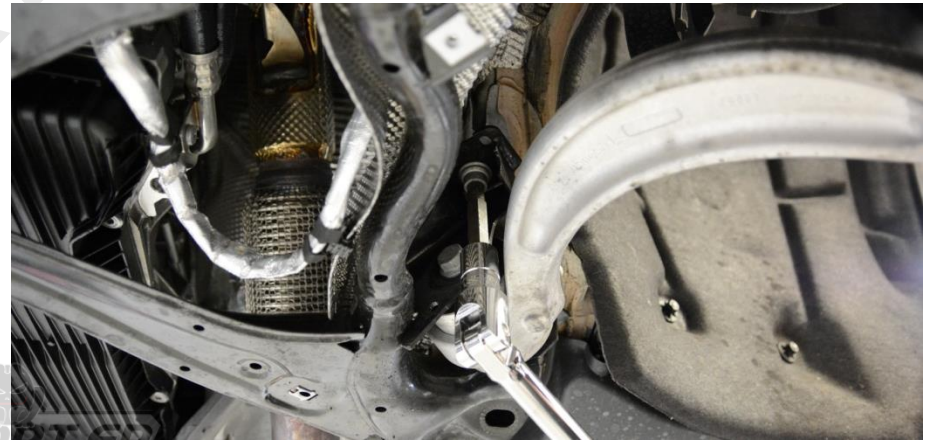
Once all bolts are threaded into place, follow the torque specs below and secure the front subframe to the chassis using a 14mm Triple Square & 18mm Socket.



Step 26

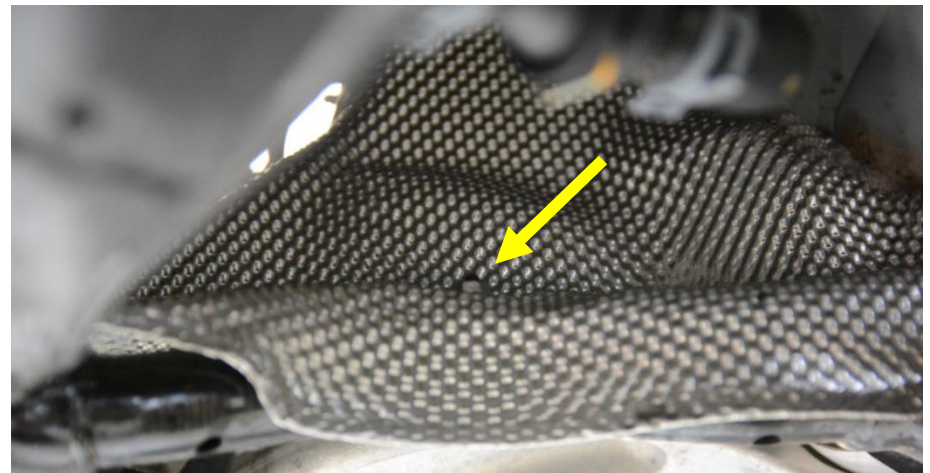
Using a 12mm Triple Square, install the final 2 front subframe bolts located above the rear lower control arms.

Torque to 50Nm + 90*.



Step 27

Using a 10mm Socket, tighten the nut securing the heat shields on either side of the vehicle to the subframe.



Step 28

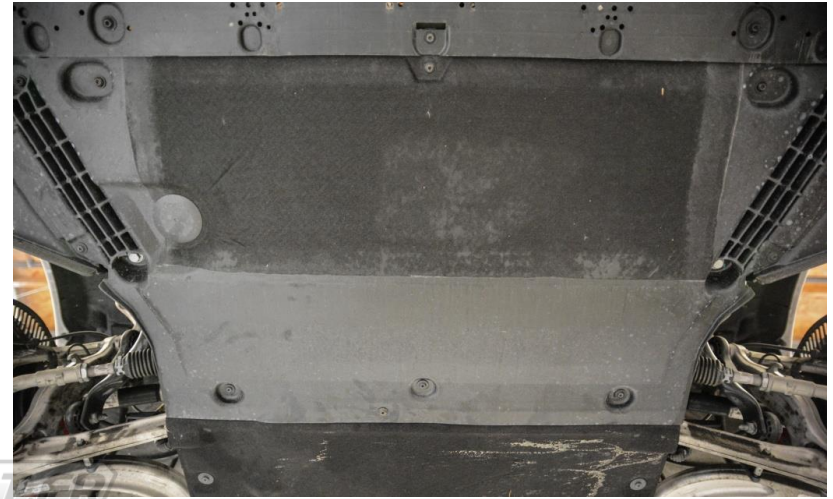
Double check that all bolts are installed and torque to spec, and then remove pole jack.

**Step 29**

Reinstall rear underbody shield using factory screws and clips.

**Step 30**

Reinstall front underbody shield using factory screws and clips. Tighten snugly, but don't overdo it.

**Step 31**

Secure front underbody shield to splash guards in wheel wells using factory screws. Reinstall upper splash guards in each wheel well.



Step 32

Ensure all connections are secure, reinstall the wheels, and lower your vehicle from the lift.

Step 33

Enjoy the Upgrade!

