



Big Brake Kit, B5 & C5 Rear, 300mm

Supplied Parts:

- 034Motorsport Brake Caliper Brackets (Set of 2)
- Hardware for Bracket (4 Allen Head Bolts)
- DOT-Approved Stainless Steel Brake Lines (Set of 2)
- Brake Line Adapters (Set of 2)
- Banjo Bolt (Set of 2)
- Crush Washers (Set of 2)

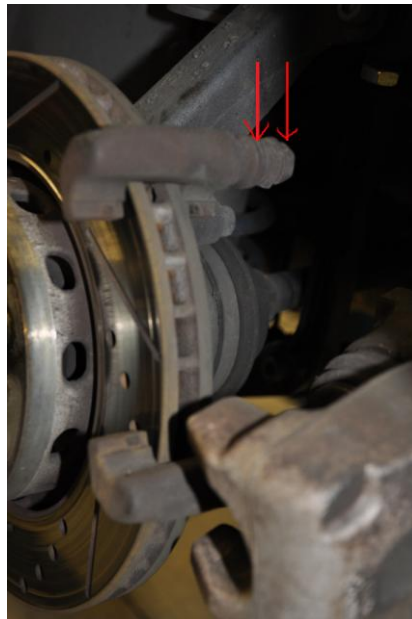
Tools Needed:

- Various Metric Sockets and Wrench
- Various Metric Wrenches
- Brake Caliper Piston Tool
- 8mm Allen Socket
- Flathead Screwdriver
- Rubber Mallet



Step 1 – With the vehicle raised securely on jackstands or a lift, remove the rear wheels.

Step 2 – Using a 13mm and 15mm open-end wrench, loosen the two bolts from the caliper to the caliper carrier.



Step 3 – Using an 11mm wrench (preferably a line wrench) and a 14mm wrench remove the brake lines from the caliper to the subframe (near the lower control arm inner bushing).



Step 4 – Remove caliper and brake pads.

Step 5 – Remove two 8mm allen bolts holding the caliper to the knuckle and remove the carrier.



Step 6 – Remove old rotor, clean up any rust while you have the opportunity.

Step 7 – Loosen the parking brake cable, to allow parking brake cable routing to be optimal. You will want to ‘disengage’ the plastic retainer that locks the cable in place. Pull the cable through the lower control arm about 2” to allow it to reach the caliper.

Note: These often break, and if they do, do not be concerned, as this will not affect any functionality of the parking brake.



Step 8 – Install the 034Motorsport 300mm Rear Brake Bracket as shown in the picture, and put the new 300mm rotor on the hub. **Note:** Brackets are not labeled, only labeled in picture for reference.



Step 9 – Install the carrier with the 034Motorsport bracket onto the knuckle, using blue thread lock on all hardware. We recommend installing new pads with the new rotors, so at this time use the brake caliper tool to depress the caliper.

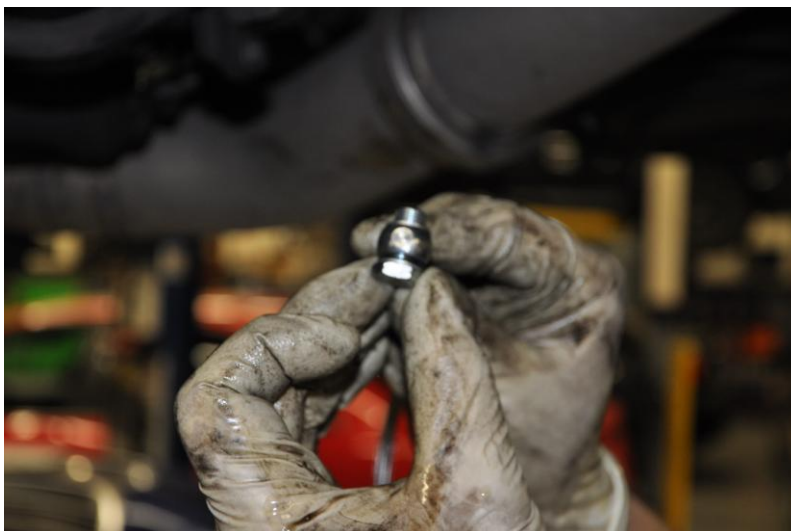
Step 10 – Install the new pads, and install the caliper to carrier bolts.



Step 11 – Install the provided brake line adapter and install it onto the factory line using an 18mm wrench and 11mm wrench.



Step 12 – Route the new brake line through the factory mounting location, and install the banjo bolt into the brake caliper using a 14mm wrench. Be sure to put a crush washer on either side of the banjo fitting itself, as pictured.



Step 13 - Do a full brake fluid flush, and button everything back up. Make sure to bed the pads and rotors shortly after.



VAG
AUTOSPORT.FR
PIÈCES D'ORIGINE ET PERFORMANCE