

[Insert link here](#)

**034 MOTOR SPORT**

034Motorsport's X34 Full Intake System for the 8V.5 RS3 and 8S TTRS is the new standard in performance. This system was engineered with performance and great looks in mind. Providing horsepower and torque gains throughout the powerband, while improving aesthetics in the engine bay, with OEM+ fit and finish. Manufactured from carbon fiber; for strength, light weight, and long lasting great looks.

**Installation Spiciness Rating: MILD**



Installation of your 034Motorsport X34 Full Intake System is a straightforward process that will take approximately 1 hour to complete.

**Supplied Parts:**

- 034Motorsport X34 Carbon Fiber Intake Air Duct
- 034Motorsport X34 Carbon Fiber Lower Air Box
- 034Motorsport Carbon Fiber Airbox
- 034Motorsport Carbon Fiber Inlet Pipe
- 034Motorsport 4" Inlet Conical Air Filter
- Heat Shield (bracket, shield, (4) M6 button head cap screws)
- Silicone Coupler & (2) Hose Clamps
- (8) M5 Socket Head Cap Screws and Washers

**Tools Needed:**

- T25 & T30 Torx Bits
- 3mm hex wrench
- 4mm hex wrench
- 7mm socket
- 8mm socket
- Pliers, or spring clamp pliers

### Getting Started

Confirm you have received all the parts included with your purchase by reading the complete guide, if there are missing components, please contact:

[customerservice@034motorsport.com](mailto:customerservice@034motorsport.com)

### About This Guide

This Install Guide documents the installation process of the open airbox version, on a 2018 Audi TTRS and RS3. There may be minor differences depending on specific vehicle, market, options, etc. Installation is identical for the closed box version.

## Install Steps

### **Step 1**

Open your hood to access the engine bay.



### **Step 2**

Remove the engine cover by pulling up.



### **Step 3**

Using a pair of pliers (or better yet, spring clamp pliers), loosen the spring clamps on the bypass hose and disconnect hose from OE intake.



**Step 4**

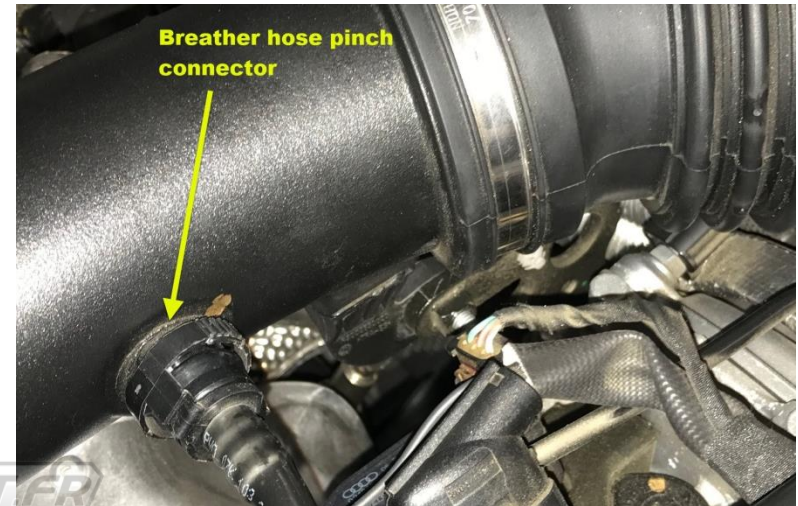
Using the same set of pliers, loosen the spring clamp at the turbo inlet and slide the clamp up the inlet pipe and off the coupler.

**Step 5**

Using the T30 Torx bit, remove the bolt securing the inlet pipe to the bracket above the exhaust manifold. This is accessible from the back, under the inlet pipe. Save bolt for heat shield installation.

**Step 6**

Disconnect the breather hose by pinching the connector and pulling it out of the inlet pipe.

**Step 7**

Unclip DSG vent from lower air box. The metal clip can be removed from the plastic mount (it will not be re-used). Be careful not to break the plastic stud.



**Step 8**

Remove the two T25 Torx screws securing the ends of the inlet air duct.

**Step 9**

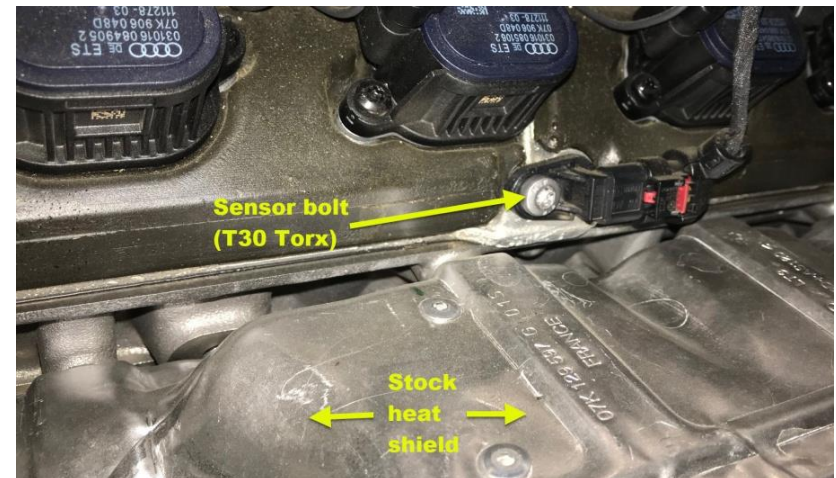
Remove the air duct by moving back and then up.

**Step 10**

The entire stock intake assembly (airbox and intake tube) can now be lifted out. A sharp pull upwards on the airbox will pop it off the mounting studs.

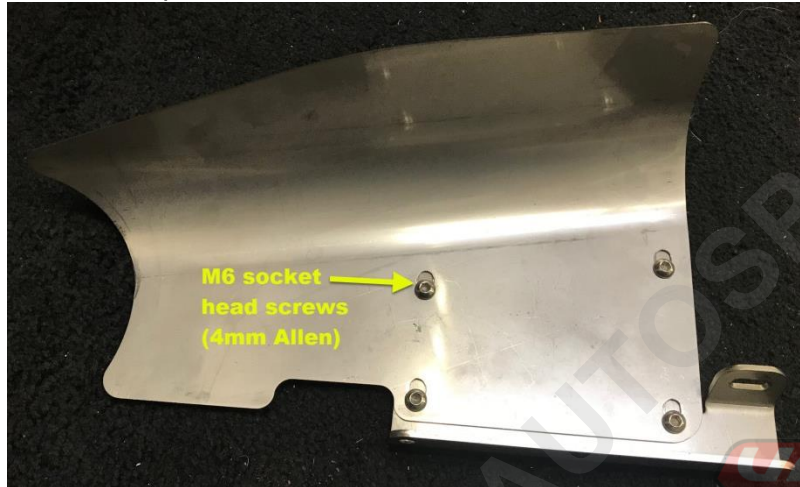
**Step 11**

Using the T30 Torx bit, remove the bolt securing this sensor on the backside of the head, above the stock heat shield. This bolt will be re-used to mount the 034 heat shield.

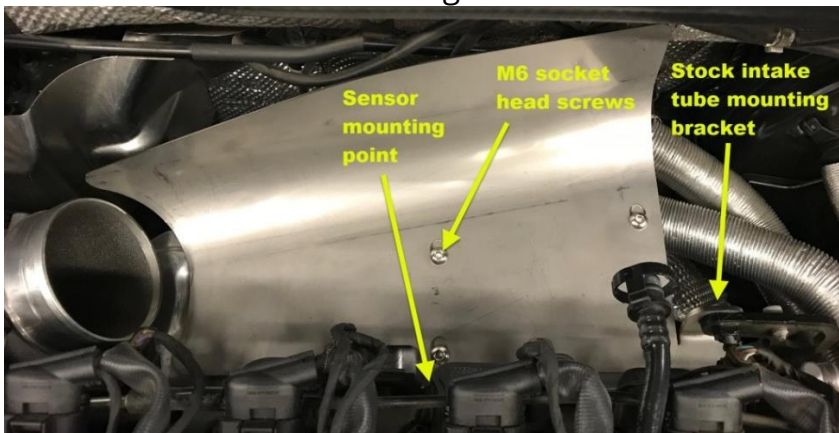


**Step 12**

Using a 4mm Allen wrench and the supplied M6 button head cap screws, assemble the heat shield.

**Step 13**

Install the heat shield by attaching to the stock inlet tube mounting bracket (Step 6), and the head sensor (Step 10). Shield location can be adjusted by loosening the M6 button head cap screws. Make sure wiring along the firewall does not contact the edge of the shield.



**NOTE:** For the 4" tube version, depending on what turbo inlet is being used (stock or 4" aftermarket), the 034Motorsport heat shield may need a little tweaking/bending to clear the assembly at the tube.

**Step 14**

Install silicone coupler to turbo inlet. Tighten hose clamp with 7mm socket.

**Step 15**

Insert intake tube into in the carbon fiber airbox top.



**Step 16**

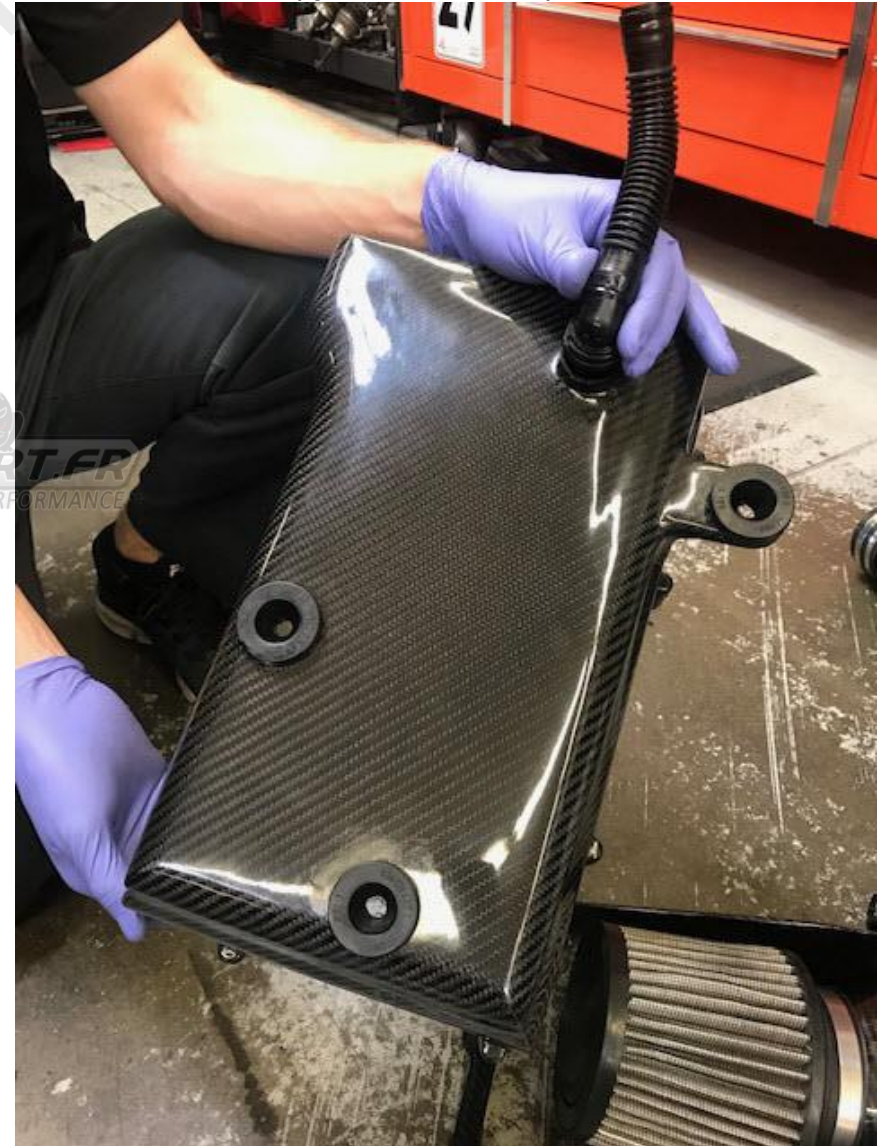
Rotate intake tube within airbox frame and install the air filter. Using an 8mm socket, tighten hose clamp. NOTE: Do not over-tighten, as this may damage the carbon tube. It does not have to be very tight, just snug.

**Step 17**

Remove the three grommets and the water drain from the bottom of the stock airbox. Note: the drain line is removed by pinching the connector.

**Step 18**

Transfer the grommets and drain line to the 034Motorsport Carbon Lower Box. Note: spraying the grommets with a little silicone, or soapy water, will help with installation.



**Step 19**

Using the supplied M5 socket head cap screws, assemble the upper and lower airbox sections. Torque to **3Nm**.

**Step 20**

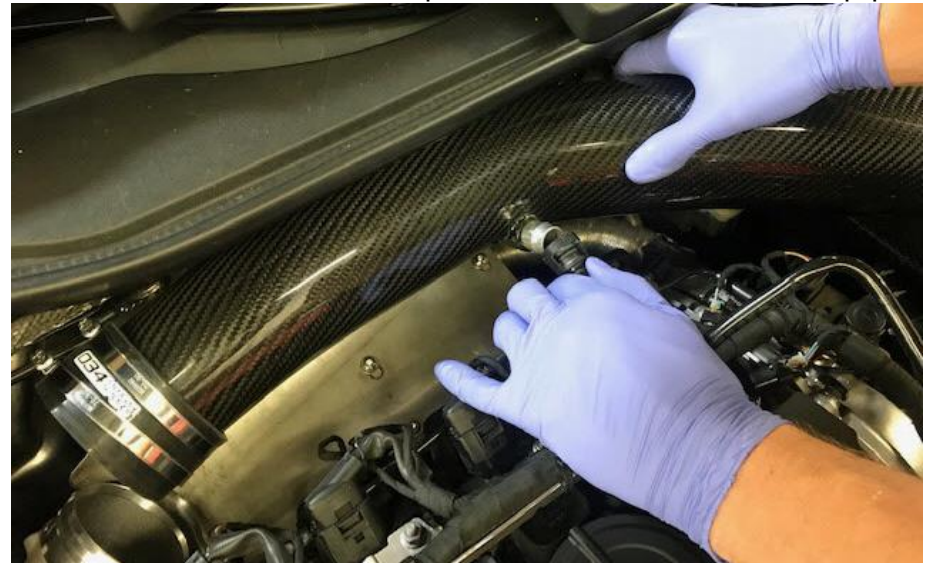
Set airbox assembly lightly into place. Insert the air duct into the lower airbox.

**Step 21**

Connect the intake pipe to the turbo inlet silicone coupler. Do not tighten yet.

**Step 22**

Connect the breather hose pinch connector to the inlet pipe.



**Step 23**

Reconnect the bypass hose to the intake pipe and reposition the clamp.

**Step 24**

Push down on the airbox to pop the grommets onto the mounting studs.

**Step 25**

Tighten the hose clamp at the turbo inlet.

**NOTE:** Do not over-tighten, as this may damage the carbon tube. It does not have to be very tight, just snug enough to make air-tight.

**Step 26**

Position the intake duct to align the mounting holes and secure with the provided M4 button head cap screws (3mm hex). Torque to **3Nm**.



#### Step 27

Insert DSG vent/mount into 6mm hole in lower airbox.



#### Step 28

Double check all connects. Reinstall engine cover.



#### Step 29

You're done. Enjoy!

